



City of
Belmont

Belmont Bulletin

Issue 3, June 2026

**Planting for
the future**

Read more on page 7

Mayor's Message

In the last edition, my comments seemed to strike a chord with many residents, who reflected on how, in the "old days", everyone knew each other. It is a reminder that strong communities are built on simple, everyday connections. Saying hello, checking in on a neighbour, or sharing a moment together.

Life is busy and things have changed, but we can still look out for one another. Sometimes, it is as simple as a quick chat at the local shops or at Belmont Forum, a wave across the street, or stopping to ask how someone is going. I remember with fondness the elderly men who would meet each day at the indoor water feature at the forum for a chat.

Now in 2026, I see it every day across our city. People helping each other out, often without fuss. It might not always be visible, but it is there, and it matters.

If we all make a small effort to connect, it adds up. That's what keeps a community strong. Not big gestures, just people taking the time to notice and care.

That's why our Your Neighbour Activation Scheme, which provides up to \$250 to help residents host small neighbourhood gatherings, is a simple way to bring people together in your street.

Together, we are building a stronger, kinder City of Belmont.

Robert Rossi Mayor

M 0408 693 584
E mayorrossi@belmont.wa.gov.au
Term expires: 16 October 2027



Your Councillors

West Ward

Cr Deborah Sessions Deputy Mayor

M 0403 907 856
E crsessions@belmont.wa.gov.au
Term expires: 20 October 2029



Cr Christopher Kulczycki

M 0404 767 583
E crkulczycki@belmont.wa.gov.au
Term expires: 16 October 2027



Central Ward

Cr George Sekulla, JP

M 0431 963 660
E crsekulla@belmont.wa.gov.au
Term expires: 20 October 2029



Cr Jarod Harris

M 0478 256 196
E crharris@belmont.wa.gov.au
Term expires: 16 October 2027



East Ward

Cr Phil Marks

M 0417 998 229
E crmarks@belmont.wa.gov.au
Term expires: 16 October 2027



Cr Bernie Ryan

M 0418 941 328
E crryan@belmont.wa.gov.au
Term expires: 20 October 2029



South Ward

Cr Jenny Davis

M 0413 579 390
E crdavis@belmont.wa.gov.au
Term expires: 20 October 2029



Cr Abedin

M 0423 789 551
E crabedin@belmont.wa.gov.au
Term expires: 16 October 2027



Learn more about your Mayor and Councillors at belmont.wa.gov.au/yourcouncil



Celebrating our volunteers

During National Volunteer Week in May, we celebrated the dedication of our long-serving City volunteers.

This year's theme 'Your Year to Volunteer' speaks to the incredible impact volunteers have and the positive change they make in our local community.

Congratulations to our Years of Service recipients and thank you to all of our volunteers.

Five Years of Service

Seena Sujit, Pia Barros, Laura Menhennet, Suzette Percival, and Sharon Thompson.

10 Years of Service

Mike Slingsby, Suzanne Dowsett, and Wenny Gowinda.

15 Years of Service

Joan Hill

If this is your year to volunteer, contact us to find local opportunities.
🌐 belmont.wa.gov.au/volunteers



Have questions? We're here to help

Visit our website, call us, or stop by the Civic Centre.

📞 **9477 7222**
✉️ belmont@belmont.wa.gov.au
📍 **215 Wright Street, Cloverdale**



Do you know a community member who goes above and beyond?

Each year the Community Service Awards celebrate the people who've made a significant contribution to our community.

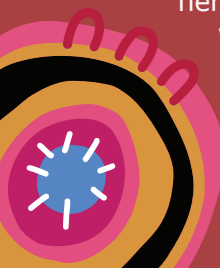
Nominations for this year's Awards close Tuesday 30 June, and we'd love to hear from you.

🌐 belmont.wa.gov.au/community-service-awards

Acknowledgement of Country

The City of Belmont acknowledges the Whadjuk Noongar people as the Traditional Owners of this land and we pay our respects to Elders past, present and emerging. We further acknowledge their cultural heritage, beliefs, connection and relationship with this land which continues today.

We acknowledge all Aboriginal and Torres Strait Islander peoples living within the City of Belmont.





Winter Night Lights

Our Winter Night Lights program is back to help you stay active during winter when the sun sets earlier.

We're turning the lights on at key reserves so you can walk your dog and exercise safely at a time that suits you.

Lights will be on from 5:30pm to 8pm, Monday to Fridays at:

- Redcliffe Park
- Peet Park
- Forster Park
- Centenary Park
- Wilson Park multipurpose court and hit up wall.

connect.belmont.wa.gov.au/winter-night-lights

At times there may be formal sports training taking place at the participating reserves. To avoid conflict, please use areas on the reserve that are not used by the club.



Linda Hulsmans at the Selby Park dog stick library.

A new Little Library for local dogs and owners

Visitors to Selby Park are enjoying our very first Dog Stick Library, designed to bring local dog owners and their pets together.

The fun park feature sits alongside the dog-themed Little Library painted by Rivervale artist Linda Hulsmans and designed and constructed by Belmont Men's Shed.

The idea is simple. Take a stick, leave a stick, and turn a simple object into a shared resource, that encourages recreation and connection among dog owners.

The addition has already proven popular, giving locals and their four-legged companions another reason to stop, play and connect with others in the community.



Take a stick, leave a stick!



Protect your pets this winter

Winter can be hard on pets, so make sure they stay warm, dry and safe. Give them a cosy shelter, and clean water.

Thunder and lightning can make pets nervous. If a storm is coming, check that fences and gates are secure or bring pets into a safe, calm place indoors.

Shop local on Belvidere Street



Marco

**Al Trancio
Slabs of Pizza**



**Randy and
Editha**

Chicken Treat



Linh

**Crusty's
Fresh Bread**



**Jason and
Samantha**

**Round the Corner
Bar and Grill**



Kev

F5 Coffee Co



Belvidere Street is open for business

For more information, visit Belmont Connect or contact the City.
connect.belmont.wa.gov.au/belvidere-street



Sign up for eRates

The new financial year is coming soon, and rates notices will be issued in early August.

To receive your rates notice by email, register for eRates on our website before Monday 20 July.

If you have registered for eRates and haven't received your notice by Wednesday 12 August, check your spam mail or contact us.

belmont.wa.gov.au/rates

Waste and Recycling Guide

Keep an eye out for your new Waste and Recycling Guide, hitting letterboxes soon.

Prefer digital? You can also search your bin collection days and book waste services on our website.

belmont.wa.gov.au/bins-waste-and-recycling



Winter planting season

This year's winter planting season has begun, with more than 50 sites across the city ready to be transformed over the coming months.

The annual program is part of our Streetscape Enhancement Strategy, and includes landscaping upgrades and waterwise planting at approximately 20

roundabouts, 15 minor verges, median strips and cul-de-sacs.

Our purpose-grown street trees are also ready for planting. You'll receive a calling card in your letterbox if a new verge tree is coming to your area.

If you spot our team out and about, stop to say hello!

connect.belmont.wa.gov.au/streetscape-enhancement-strategy





Draft Local Planning Strategy and draft Local Housing Strategy

Our draft Local Planning and Local Housing strategies are available for comment.

The Local Planning Strategy sets out the long-term planning direction for our city, including the preparation of a new Local

Planning Scheme and Local Planning Policies.

The Local Housing Strategy provides analysis and recommendations to guide the City's future housing needs and supply.

Submissions close Thursday 9 July
🌐 connect.belmont.wa.gov.au



Have your say at Belmont Connect

Want to get involved with engagement projects near you? Visit Belmont Connect to stay up to date, sign up for alerts and contribute to projects that matter to you.

Not digitally savvy? We also welcome submissions in writing via email to belmont@belmont.wa.gov.au or letter.

🌐 connect.belmont.wa.gov.au

Disability Access and Inclusion Plan

We're updating our Disability Access and Inclusion Plan and want to hear about your experiences, needs and priorities.

The Plan covers the next five years and will guide how we continue to improve access, inclusion and participation for people with disability across our community.

Submissions close Tuesday 30 June.

🌐 connect.belmont.wa.gov.au/DAIP



Welcoming the Noongar season of Makuru

Hear from Clive Smith, local Noongar man who has lived in our City for over 18 years.

"Makuru is a special time of year for me. It is the season of the first rains, when the cold weather sets in and the land begins to change. The winds grow stronger, and the Country becomes wet and alive again. My grandfather taught me how to read these changes in the weather, to understand what they mean, and how they guide the way we live.

Makuru is also a time when fire becomes important. As I was taught, fire brings family together. We would gather around open fires, sharing stories, learning, and staying warm. The smoke rising into the air carries connection, to each other, to our ancestors, and to Country. You can hear the magpies (Koolbardi) singing out through the cold mornings, reminding us that life continues through the season.

During this time, people would move to more sheltered places. It is a time for slowing down, reflecting, and strengthening bonds within family and community. These teachings have stayed with me, and I continue to carry them forward, keeping that connection to my grandfather, culture, and Country alive."



Celebrate NAIDOC Week During Makuru

Visit belmont.wa.gov.au/events or contact us to find out more



What's on

No tickets
 Free tickets
 Paid tickets
 Free residents, paid non-residents tickets
 Contact us



Fantasy Map Making and Writing Workshop

Friday 19 June, 4pm to 5:30pm
 Innovation Lab, Ruth Faulkner Library

Enjoy a fantasy craft and creative writing workshop with published comic writer Nina Dakin.

For young people 12 to 18 years

Wiggles 'n' Giggles

Wednesday 1 July, 9:30am to 11:30am
 Forster Park Community Centre
 Wednesday 5 August, 9:30am to 11:30am
 Belmont Oasis

A free monthly program designed to get your little ones up and moving with their family. Sessions are drop in with a one-off registration required.

For families from 6 months up to 5 years

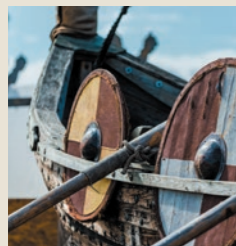


Crafternoon: Moss Rugs

Saturday 20 June, 12pm to 2pm
 Innovation Lab, Ruth Faulkner Library

Explore the techniques of latch hooking, weaving, and loop knots as you craft a whimsical rug for your home or as a thoughtful gift.

For adults and young people 16+ years



Historia: Vikings

Sunday 28 June, 2pm to 3pm
 Innovation Lab, Ruth Faulkner Library

From fierce dragon figureheads to sturdy sails, learn about the longboats that carried the Vikings across oceans and create your own mini longboat.

For children 8 to 13 years

Whitegoods and E-waste drop-off day

Saturday 4 July, 8:30am to 1pm
 Operations Centre, 180 Planet Street, Carlisle

City of Belmont residents or property owners can drop off their unwanted whitegoods and e-waste. For details on materials accepted visit our website or call us on 9477 7118.

For City of Belmont residents and property owners



Scan here for more information



Belmont Interest Group: Museum Talk and Tour

Friday 3 July, 2:30pm to 4:30pm
 Seniors Activity Hall, Belmont Hub

Join a special talk and guided tour of the museum exhibition 'Get in the Game' winter sports edition.

For adults and seniors.



School Holidays: Art Attack

Monday 6 July, 10am to 11:30am
 Innovation Lab, Ruth Faulkner Library

Get crafty these school holidays! We're bringing all the supplies so you can drop-in to the library for a morning of making and creating.

For children 5 to 12 years.



Belmont Pottery Group Evenings

Tuesday 7 and 14 July, 6pm to 9pm
 Thursday 9 and 16 July, 6pm to 9pm

Belmont Resource Centre

The Belmont Pottery Group will be exploring wheel work pottery on Tuesday nights and hand-built pottery on Thursday nights.

For everyone



School Holidays: Culture and Craft with Auntie TJ

Tuesday 7 July, 10am to 12pm
 Events Room, Ruth Faulkner Library

Join Elder Auntie TJ for a culture and craft session at Ruth Faulkner Library.

For children 6 to 10 years



School Holidays: Mochi Donuts

Thursday 9 July, 4:30pm to 6pm
 Demonstration Kitchen, Ruth Faulkner Library

Learn how to make healthy mochi donuts from scratch to entertain your family and friends. Nami will show how to decorate your donut in a Japanese kawaii (cute) style.

For young people 12 to 18 years

One-on-One Family History Help

Tuesday 7 July and Tuesday 4 August 1:30pm to 2:30pm and 3pm to 4pm
 Peg Parkin Room, Ruth Faulkner Library

Receive one-on-one research support from a museum team member to help guide you through your family history research journey. Bookings essential, if you need help booking contact us on 9477 7150.

For adults and seniors



NAIDOC Week: Community Markets in Makuru

Saturday 11 July, 10am to 2pm
 The Glasshouse

Enjoy a special NAIDOC Week themed Community Markets with free cultural activities, live music, workshops and interactive experiences, alongside artisan stalls and food vendors.



School Holidays: Music Makers for Minis

Tuesday 14 July, 10am to 10:45am and 11am to 11:45am

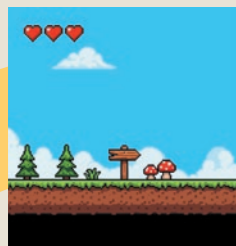
Children's Space, Ruth Faulkner Library

Join us for an engaging craft and music play-based experience for children. Bookings essential.

For children 2 to 5 years

What's on

No tickets
 Free tickets
 Paid tickets
 Free residents, paid non-residents tickets
 Contact us



School Holidays: Intro to Game Design

Thursday 16 July, 10am to 1pm
 Events Room, Ruth Faulkner Library

Join EdgyX this school holidays for a hands-on game-making workshop where children will design, build, and play their own digital games.

For children 8 to 13 years



Crafternoon: Jotterbook Flowers

Saturday 25 July, 12pm to 2pm
 Innovation Lab, Ruth Faulkner Library

Learn to make your own everlasting paper flowers in this relaxing art workshop for all abilities.

For adults and young people 16+ years



Speaker Series: Author Talk with Sasha Wasley

Sunday 19 July, 2pm to 3pm
 Events Room, Ruth Faulkner Library

Join bestselling author Sasha Wasley who will share the fascinating inspiration behind her new book 'The Society of Literary Marauders'.

For adults



Historia: Chocolate

Sunday 26 July, 2pm to 3pm
 Demonstration Kitchen, Ruth Faulkner Library

Have a go at tempering chocolate, creating your own chocolate molds and learn the history of a simple bean and how it changed the world.

For children 8 to 13 years

Anime Squad: One Piece

Wednesday 22 July, 3:30pm to 5pm
 Events Room, Ruth Faulkner Library

If you enjoy relaxing to One Piece, SpyxFamily, or another of the many anime titles, we invite you to join our squad!

Draw manga characters, watch anime on Crunchyroll and snack on free popcorn. This month we will be watching One Piece: Alabasta, episode 92 onwards. Booking essential.

For young people 13 to 18 years



Belmont Interest Group: Planning for the Future

Friday 7 August, 2:30pm to 4:30pm
 Seniors Activity Hall, Belmont Hub

Join Elder Rights WA for an informational presentation on planning for the future.

For adults and seniors



The Locals Series: Avon Descent

Sunday 9 August, 11am to 3pm
 Garvey Park

Enjoy a day by the river packed with live music, hands-on activities, and community spirit as we embrace the excitement of the Avon Descent. Embrace the elements at this free event.

For everyone



Some events require booking in advance, please visit belmont.wa.gov.au/events or contact us to find out more.

AFTERDARK

Performance Lounge

Music – Cabaret – Stories

The neon lights will buzz back to life when the Afterdark Performance Lounge returns to The Glasshouse from Thursday 30 July with a glittering celebration of the iconic music, stories and artists.

“ a cheeky, neon-lit cabaret space with speakeasy vibes and velvet corners made for whispering secrets or sipping something fizzy. ”

Xpress Mag

Performances by



Australian cabaret icon Carlotta



Steven Oliver



Catherine Alcorn



Michelle Pearson



Michael Griffiths

and more...



See the full program for more details @ belmont.wa.gov.au/afterdark
 Tickets on sale Monday 15 June from 9am
 Don't miss it!

**Entries
now
open!**

ART AWARDS

Art Awards applications are open

Do you have a creative story to tell and artwork to share with the community?

Entries for this year's Art Awards are now open to youth, emerging and established artists across a variety of mediums and styles.

Enter to showcase your work in the two-week exhibition and win up to \$10,000 in prizes.

Entries close: Thursday 9 July

**Exhibition: Saturday 24 October to
Saturday 7 November**

🌐 belmont.wa.gov.au/art-awards

Image Credit: 2025 overall winner.
"Excelsior Street" by Harry Young

The Artist's Place Gallery

Henri Strzelecki | 'Cats: Teachers of Joy'

Thursday 11 June to Friday 31 July

Henri Strzelecki is a local emerging artist who explores the playful and cheeky personalities of our beloved pet cats through portraiture.

Framed with vintage fabric rosettes, this playful exhibition celebrates the rich history and deep connection to our feline companions.

🌐 belmont.wa.gov.au/the-artists-place-gallery



Henri Strzelecki, Cozy, 2026 - Acrylic on mdf with up-cycled fabrics.

Belmont Business Innovation Grant



Congratulations to Renae Tapley, the latest recipient of our Belmont Business Innovation Grant.

Renae received \$10,000 to help launch Future Materials, a digital platform which makes it easy for architects and designers to find, source, and price eco-friendly materials for their projects.

🌐 belmont.wa.gov.au/BBIG



Community Lab: LEGO Lounge

Unleash your creativity with LEGO! Lego Lounge is a free space for adults to build with bricks. Drop-in from 5pm to 6:30pm every Tuesday at the Ruth Faulkner Library.

Enjoy lego kits including the iconic red telephone booth or time machine from 'Back to the Future'.

With a huge selection of bricks and helpful books to spark inspiration, you'll have all you need to bring out your inner child.



Upcoming roadworks



For a full list of all upcoming roads, drainage and footpath projects or to report a problem visit our website.

belmont.wa.gov.au/on-the-roads

Location	Section	Description of Works
Stanton Road	Lyall Street intersection	Installation of raised plateau
Stanton Road	Moreing Street intersection	Installation of raised plateau
Arlunya Avenue	Wright Street to Fulham Street	Asphalt overlay
Armadale Road	Fulham Street to Oats Street	Asphalt overlay
Connell Street	Harley Street to Daly Street	Asphalt overlay
Fulham Street	Abernethy Road to Belgravia Street	Asphalt overlay
Kimberley Street	Great Eastern Highway to Wallace Street	Asphalt overlay
Mozart Mews	Surrey Road to end of cul-de-sac	Asphalt overlay
Robinson Avenue	Alexander Road to end of cul-de-sac	Asphalt overlay

New waterplay feature for Volcano Playground

A new waterplay feature is on its way to Volcano Playground this year.

The addition will replace the old jumping-jewel stepping-stones and bring an interactive play

experience to local kids and families.

Some areas of the playground will be closed while works are underway.

belmont.wa.gov.au/park-and-reserve-maintenance



Supporting our local super stars

Congratulations to our recent donation recipients who continue to make our community proud on the national and international stage.

- Archie Pickering – 2026 Australian Little Athletics Championships
- Sanath Thakur - 2026 Australian Deaf Games
- Alia Williams - Sport Climbing Youth Nationals 2026
- Alicia Ward - 2026 National Indoor Cricket Championship

- Julian Goodwine - Sport Climbing Youth Nationals 2026
- Jasmin Steiner - Equestrian Special Olympics 2026
- Kieren Webster – Aus vs. NZ Trans Tasman Series
- Jonathan Richetti - 2026 National Judo Championships
- Hamza Amaidia – 2026 National Judo Championships

If you're competing at a national or internal level in a sporting or cultural endeavour, we'd love to hear from you.

belmont.wa.gov.au/sporting-donations



Mayor Rossi with Hamza Amaidia

Get involved in MOVEtober 2026

Are you a local business, organisation or club that focuses on physical activity?

In October we want to celebrate and promote providers that get us

moving our bodies. Expressions of Interests close Sunday 28 June.

To get involved contact recreation@belmont.wa.gov.au or call 9477 7454.

belmont.wa.gov.au/movetober-eoi



Every year, Refugee Week highlights the positive contributions refugees have made to Australia, and raises awareness for the challenges they face.

This year's theme is A Million Stories, recognising the milestone of 1,000,000 refugees being welcomed to Australia since World War II.

In the spirit of the theme, this edition we're sharing refugee stories from two local women, Sabah Suleiman and Hawa Hassan.

Sabah

You may know Sabah Suleiman as the leader of the Multicultural Women's Friendship Group.

Born during the Eritrea-Ethiopia conflict, Sabah's family experienced political violence, losing her father and brother when she was just 18 months old. Soon after, they fled on foot to a refugee camp in Sudan.

Life there was difficult, but community offered connection and stability through family, school and fellow refugees. Around this time, Sabah met her future husband.

In 1996, she migrated to Australia to join him in Melbourne. Speaking little English and raising a young child far from family, she experienced isolation and depression.

Through schools and local groups, she rebuilt connection and began creating spaces for other women facing similar challenges.

After moving to Perth in 2020, Sabah became deeply involved in our community.

She now leads programs that support women through shared activities, cultural events and domestic violence assistance.

Nearly 30 years on, she continues to build the kind of community that gave her the opportunity to belong.



Hawa

If you've raised a baby locally in the past two decades, you may have met Hawa Hassan, through her work in playgroups and early childhood programs.

Hawa was born in Somalia, where instability meant she never received a formal education. By adulthood, she could not write her own name.

In 1991, civil war forced Hawa and her husband to flee. Seven months pregnant, she walked for more than a month to reach safety. They later settled in refugee camps in Kenya, where they lived for 14 years and where Hawa gave birth to three of her five children.

In 2004, she arrived in Australia on a humanitarian visa and made the City of Belmont her home.

A local women's group became a turning point for Hawa. She gained confidence, improved her English and began adult education.

She went on to build a career supporting children and families facing disadvantage.

Determined her children would have greater opportunities, Hawa prioritised their education. All completed school and pursued further study, an outcome she views as her greatest achievement.



AFTERDARK

“ *Raucous, glitter-drenched, and shamelessly fun* ”
Xpress Mag

Music – Cabaret – Stories

Thursday 30 July to Sunday 9 August
The Glasshouse - 215 Wright Street, Cloverdale

Tickets on sale Monday 15 June from 9am
www.belmont.wa.gov.au/afterdark



Connect with us

belmont.wa.gov.au

City of Belmont, 215 Wright Street, Cloverdale WA 6105
Locked Bag 379, Cloverdale WA 6985
Open 8:30am to 4:45pm, Monday to Friday

PH: 08 9477 7222
A/H: 08 9477 7224
belmont@belmont.wa.gov.au



City of
Belmont

Content correct as at 26 May 2026.
Dates subject to change.