

A guide to your Food Organics Garden Organics (FOGO) system



YOUR FOGO BIN IS COLLECTED WEEKLY

What is a FOGO bin?

FOGO stands for Food Organics and Garden Organics. Your FOGO bin is for kitchen scraps and garden material which will be used to create compost. A handy way to think of FOGO material is "If it lived or grows - in it goes."

Why FOGO?

Around 50% of our household waste is food scraps and garden organics. The FOGO bin makes it easy for you to separate this material, so that it can be turned into compost instead of going to landfill.

By separating your waste correctly, you are already making a positive impact on our community. The new bin system will also allow the City of Belmont to recover more waste as a resource, divert waste from landfill and reduce the cost of waste management.

Food organics and garden organics make up about 50% of household waste. By putting organic waste in the FOGO bin it can all be turned into compost.



You can start using your new FOGO service now.

USING A KITCHEN CADDY

The City of Belmont has provided a kitchen caddy and a supply of certified compostable liners, to help separate your food scraps. If you move out, please leave the kitchen caddy behind.

If you use a caddy liner, ensure it is certified compostable. As they break down easily, it is recommended to change caddy liners every 2 to 3 days.

Remember: Never use biodegradable bags as these do not break down and will contaminate your FOGO material. Alternatives to a liner include; homemade newspaper liners, or placing food scraps loose in the kitchen caddy.



Certified compostable liners

These are made from natural materials, break down easily and can be composted. Certified compostable bags always have the seedling logo.



Biodegradable or degradable bags

These break down into fragments of plastic and contaminate the compost.



Plastic bags

These don't break down and contaminate the compost.

FOGO FOR COMPOST COLLECTED WEEKLY

What can go in your FOGO bin?

If it didn't grow, it's not FOGO. Only food scraps, garden waste and compostable liners can go in the lime-green lid FOGO bin.



Food scraps



Fruit and vegetables



Bread, rice and dairy



Meat, bones, shells and seafood



Coffee grounds and tea bags



Used paper towels, tissues and shredded paper



Plants, weeds and small prunings



Compostable liners and food contaminated paper products

IMPORTANT INFORMATION



No nappies



No plastic



No glass

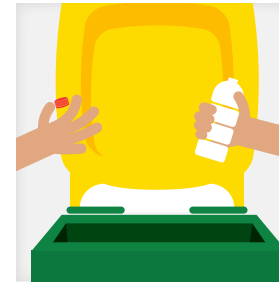


RECYCLING COLLECTED FORTNIGHTLY

THREE EASY RECYCLING RULES

1 LIDS OFF

Small plastic lids contaminate recycling.



2 RINSE

Removes contamination.



3 KEEP IT LOOSE

Loose items get recycled, items in bags do not.



If you're unsure what should go in your yellow lid recycling bin, download the Recycle Right App or find the answer online at recycleright.wa.gov.au



WHAT CAN GO IN YOUR RECYCLING BIN?



Glass bottles and jars
(lids removed)



Paper and cardboard
(flattened)



Cans



Plastic bottles
and containers
(lids removed)

Items must be clean, empty and loose in the bin.

IMPORTANT INFORMATION



No food scraps



No batteries or
hazardous waste



No clothing



No nappies

Use your general waste bin for items that cannot be composted or recycled. If you're sorting your waste correctly, this smaller bin should be big enough for most households.

- General rubbish
- Nappies and hygiene products
- Soft plastics and polystyrene
- Meat trays
- Small plastic items (straws, lids, cutlery)

IMPORTANT INFORMATION



No e-waste



No light globes

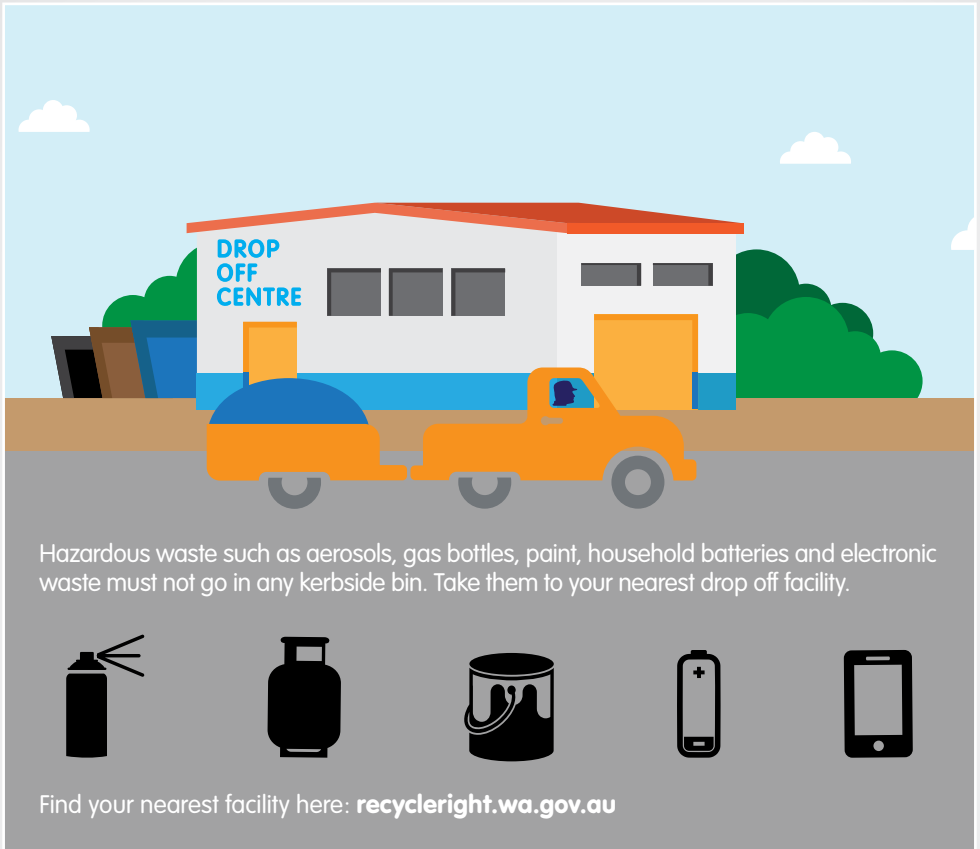


No aerosols



No paint





Hazardous waste such as aerosols, gas bottles, paint, household batteries and electronic waste must not go in any kerbside bin. Take them to your nearest drop off facility.



Find your nearest facility here: recycleright.wa.gov.au

For more information on FOGO and any other waste enquiries, contact the City of Belmont via:

Website: www.belmont.wa.gov.au/fogo

Email: fogo@belmont.wa.gov.au

Phone: (08) 9477 7222

Office Hours: Monday to Friday, 8:30am to 4:45pm

For additional information on what goes in each bin or disposal options:

Visit recycleright.wa.gov.au or download Recycle Right from the App Store.

