

CITY OF BELMONT

ART AWARDS



Be in the running to win a prize worth

\$200!

including a \$100 Belmont Forum Gift Voucher!



The Art Adventure Trail will take you on a journey to see some exciting artworks!

Beginning with the Art Awards Exhibition in The Glasshouse, the trail will lead you over to the Belmont Hub Library before finishing in the Belmont Forum.

Once you have completed your Adventure Trail activity sheet, drop it off at the Belmont Forum Service Desk to go in the draw to win a prize valued at \$200 including a \$100 Belmont Forum Gift Voucher!

The Art Adventure Trail is suitable for children ages 5 and up. Young children will need the help of a parent or guardian.

Some parts of the hunt require the crossing of busy roads, so please be careful and go with a grown-up.

Good luck!

Terms and Conditions:



BELMONT
CITY OF OPPORTUNITY



Sponsored by:



perth now

artsource



ART ADVENTURE TRAIL



Location 1

The Glasshouse

- 1 Can you find a painting of black swans? Hint: it's by Anthony Dodd. How many swans are in the painting?

- 2 Find the painting with five fish. Hint: it's by Bahareh Fartashtoloue. What's the title of the painting?

- 3 Find the close-up photograph of the tiny insect. Hint: it's by Sky Edwards. What colour is the insect?



Location 2

Belmont Hub and Faulkner Park

- 4 Inside the library, on the ground floor, you can find a work called 'Belmonster Hub' by Cameron Aitkenhead. How many monsters can you find in the artwork?

- 5 Find Shane Hansen's artwork 'Six Seasons - Djilba' on Level 1 of the Belmont Hub, at the entrance to the Belmont Museum. What animals can you see in this artwork?

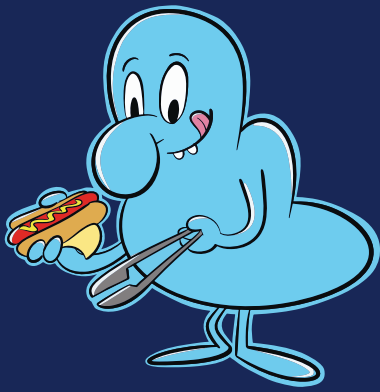
- 6 Find the big bronze sculpture 'Spirit of the Community' by Andrew Kay. Hint: you can see it from the library entrance. Name three animals you can see on the panels.



Wright Street

Belmont Forum
Questions 7-9





Location 3

Belmont Forum



Belmont Forum
Questions 7-9

7 Along Wright Street, on the outside of Belmont Forum just past Robinson Avenue, you'll see a mural by Melski. Which insect is orange?

8 Head back toward the nearby taxi rank, cross the crosswalk and enter the Nature Play courtyard near the entrance to the Fresh Food Precinct. You'll see five artworks by Respoke of flying kites. Can you name four colours used in this artwork?

9 Go inside Belmont Forum, turn right and go up the escalator next to Red Dot. On the way back down the artwork you will find an artwork high up on the wall. Who is this artwork by?



Contact Details



Please complete the below form prior to submitting your entry.

Child's name:
.....

Parent/Guardian name:
.....

Phone:
.....

Email:
.....

When you have finished your Art Adventure Trail, and for your Chance to Win a Prize valued at \$200 (including a \$100 Belmont Forum Voucher), find the Belmont Forum Customer Service Desk to submit your entry!

The Customer Service Desk is located between Kmart and Coles.

BELMONT
CITY OF OPPORTUNITY

