

CITY OF BELMONT Facilities for Hire

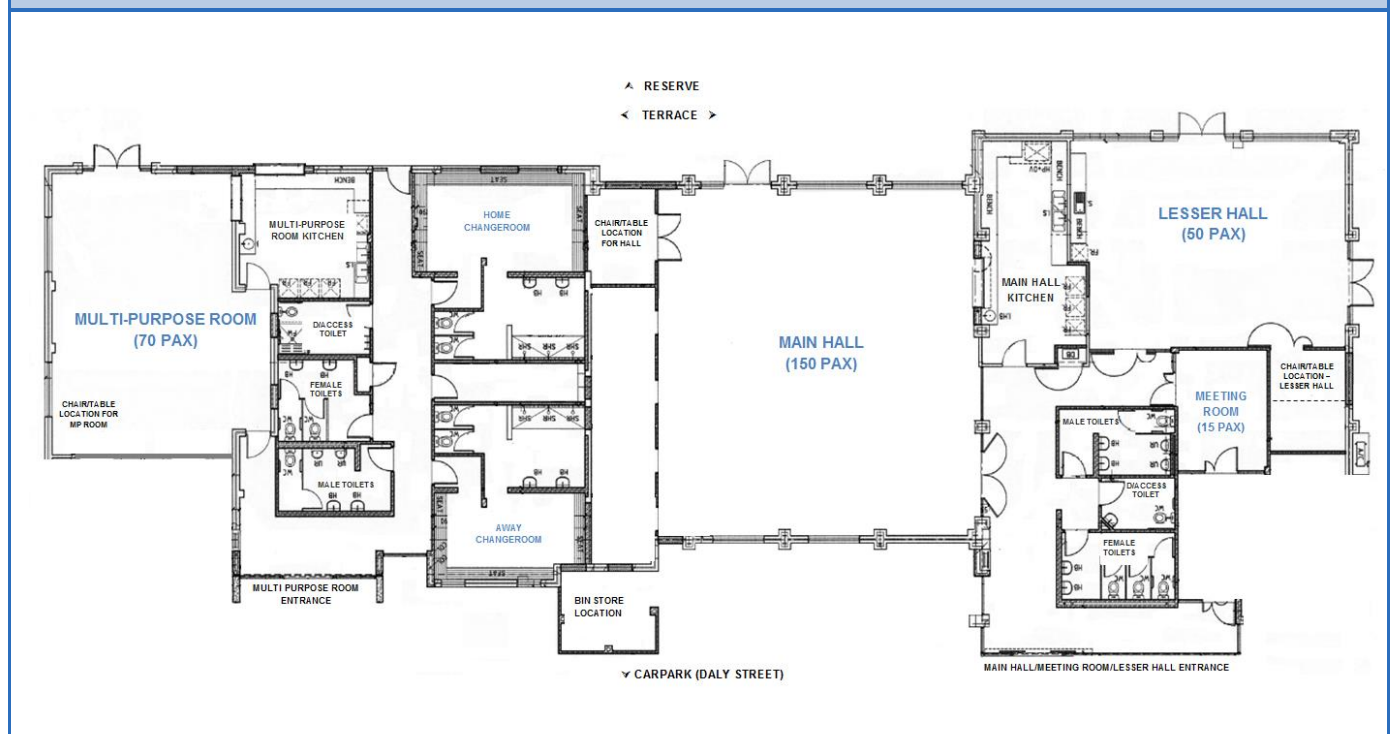
Centenary Park Community Centre & Reserve



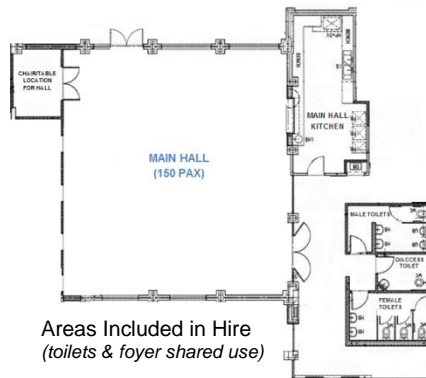
Centenary Park Community Centre is located close to Great Eastern Highway and features a large main hall, ideal for large functions and dance classes, a multi-purpose room primarily used by sporting clubs and a lesser hall that is ideal for playgrounds and smaller functions. The center also contains a small meeting room. It is adjacent to a sporting reserve that is primarily used for cricket and rugby. There is a large lake area with multiple gazebos for picnics and barbeques.

GENERAL INFORMATION	
Address	105 Daly Street, Belmont (Corner of Daly Street & Barker Street)
Access Friendly	Yes, access friendly parking, toilets and ramps available
CCTV	Yes (cameras will not be turned off for bookings and are not permitted to be obstructed at any time)
Parking	Yes – 50+ carpark bays plus street parking
Wi-Fi	No
Equipment	Items such as TV's, projectors, audio/visual equipment and also cleaning equipment etc. are not provided and not available for hire through the City. Hirers have to supply all their own required equipment.

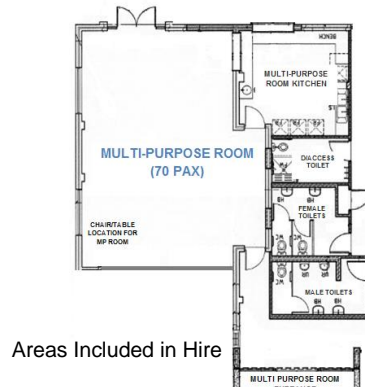
ROOMS AVAILABLE FOR HIRE



MAIN HALL	
Size	Approximately 12m x 13m (156sqm)
Max Capacity	150 people <i>(It is an offence under Health Act 1911 to exceed the maximum capacity stipulated on the certificate of approval)</i>
Floor	Wooden
Chairs	150 <i>(measurements and photos available upon request)</i>
Tables	20 trestle tables - 1800mm x 750mm <i>(photos available upon request)</i>
Air Conditioning	Evaporative <i>(cooling only)</i>
Kitchen	Yes, included in hire is a large kitchen with a fridge/freezer, large gas stove and electric oven, auto boiler urn, microwave and servery to hall. Hirers are required to bring all their own plates/cutlery/cookware/cleaning equipment. The kitchen is to be used for warming up food purposes only.
Toilets	Yes – shared facilities with the Lesser Hall & Meeting Room (located in foyer)



MULTI-PURPOSE ROOM	
Size	Approximately 6.5m x 10.5m (68sqm)
Max Capacity	70 people <i>(It is an offence under Health Act 1911 to exceed the maximum capacity stipulated on the certificate of approval)</i>
Floor	Vinyl
Chairs	70 <i>(measurements and photos available upon request)</i>
Tables	10 trestle tables - 1800mm x 750mm <i>(photos available upon request)</i>
Air Conditioning	Evaporative <i>(cooling only)</i>
Kitchen	Yes, included in hire is a fridge/freezer, small stove and oven, auto boiler urn and microwave. Hirers are required to bring all their own plates/cutlery/cookware/cleaning equipment. The kitchen is to be used for warming up food purposes only.
Toilets	Yes – this room has its own facilities (located in passageway)
Additional	Pin board available for use during hire
Note	The kiosk roller door that serves outside is <u>not</u> available to casual hirers



LESSER HALL	
Size	Approximately 7.5m x 10m (75sqm)
Max Capacity	50 people <i>(It is an offence under Health Act 1911 to exceed the maximum capacity stipulated on the certificate of approval)</i>
Floor	Vinyl
Chairs	50 <i>(measurements and photos available upon request)</i>
Tables	7 trestle tables - 1800mm x 750mm <i>(photos available upon request)</i>
Air Conditioning	Evaporative <i>(cooling only)</i>
Kitchen	Yes, included in hire is a small fridge/freezer, auto boiler urn and microwave. Hirers are required to bring all their own plates/cutlery/cookware/cleaning equipment. The kitchen is to be used for warming up food purposes only. The cupboards are locked and not available for casual hirers.
Toilets	Yes – shared facilities with the Main Hall & Meeting Room (located in foyer)
Additional	Pin board available for use during hire



MEETING ROOM	
Size	Approximately 3.5m x 4.4m (15sqm)
Max Capacity	15 people <i>(It is an offence under Health Act 1911 to exceed the maximum capacity stipulated on the certificate of approval)</i>
Floor	Carpet
Chairs	15 <i>(measurements and photos available upon request)</i>
Tables	3 trestle tables - 1800mm x 750mm <i>(photos available upon request)</i>
Air Conditioning	Split System <i>(cooling and heating)</i>
Kitchen	None included
Toilets	Yes – shared facilities with the Main Hall & Lesser Hall (located in foyer)



Areas Included in Hire
(toilets and foyer shared use)

RESERVE	
Sport Hire <i>(fees applicable)</i>	WINTER: Rugby – Line markings and goals in place 1 April – 30 Sept SUMMER: Cricket – Line markings and pitch in place 1 Oct – 30 March
Parking	Parking is available in the centre carpark and in the bays provided along Daly Street.
Toilets	There is an auto toilet located near the cricket practice nets – open during daylight hours.
Oval Lighting	There are two light towers available for hire – fees apply and suitable for large ball sport training only.
Changerooms	Yes – available for hire with reserve (toilets/showers)
Additional <i>(free to use)</i>	<ul style="list-style-type: none"> • Cricket practice nets available all year round • Outdoor exercise equipment • There is a free to use enclosed playground located next the Lesser Hall • Playground located near Elmsfield Street



Video tours of this facility are available on the City's website
<http://www.belmont.wa.gov.au/Community/VenuesForHire>

For further information and availability please contact venue.hire@belmont.wa.gov.au



