

# DEVELOPMENT AREA 6

## COMMUNITY ENGAGEMENT & CONSULTATION

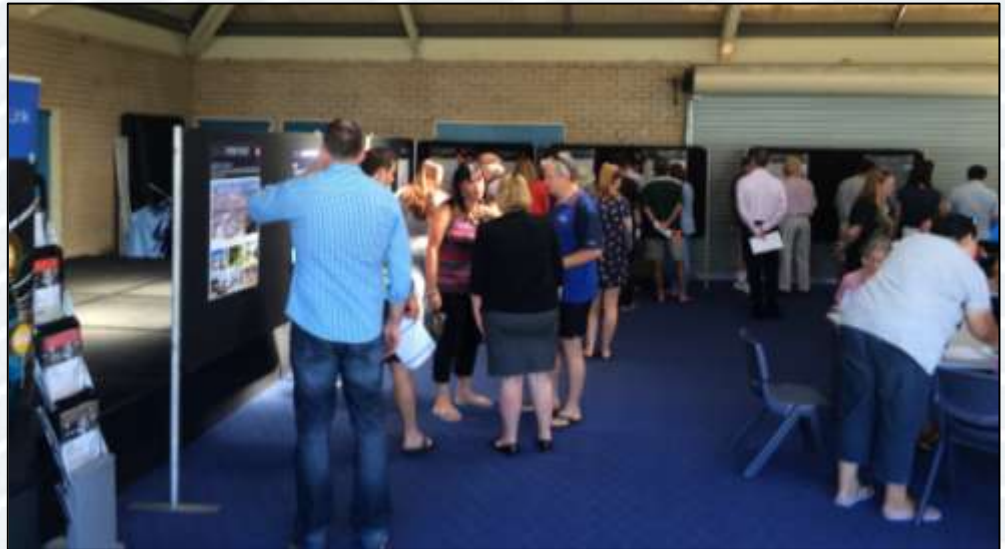


**Jarrold Ross**  
Coordinator Planning Services  
City of Belmont



# COMMUNITY OPEN DAY SUMMARY

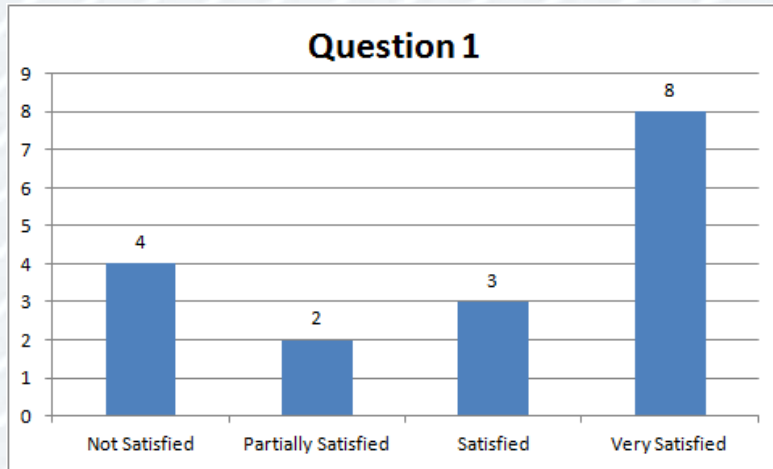
- Approximately 150-200 local residents and interested persons attended.
- Total of 21 feedback forms were submitted on the day and the days thereafter (~10%).
- Generally the feedback indicated that the community was satisfied with the level of information presented on the day and the opportunity to provide feedback and input.





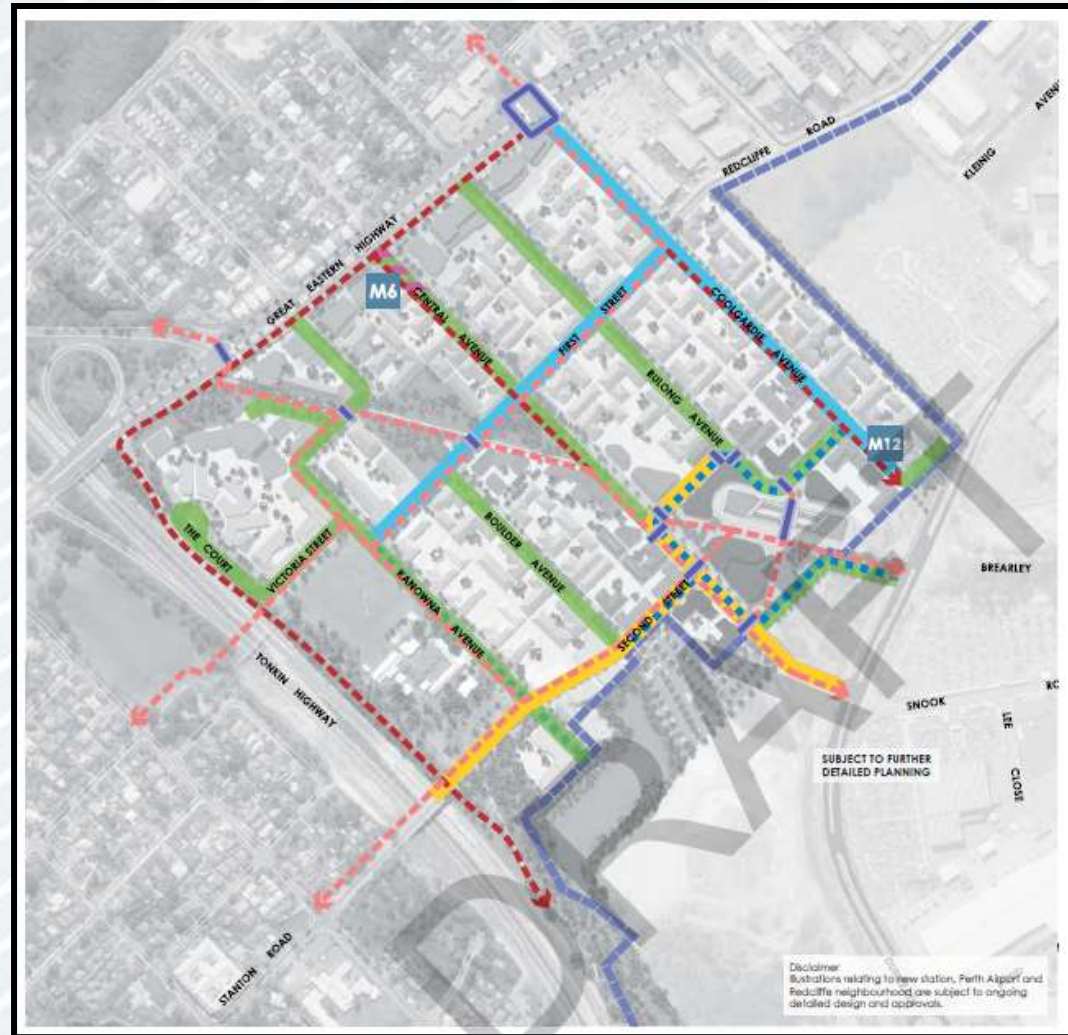
# 1. ROAD NETWORK AND PARKING LOCATION

***Are you satisfied with the proposed layout and character of the indicative road network and parking location as shown on the detailed plan? (17)***



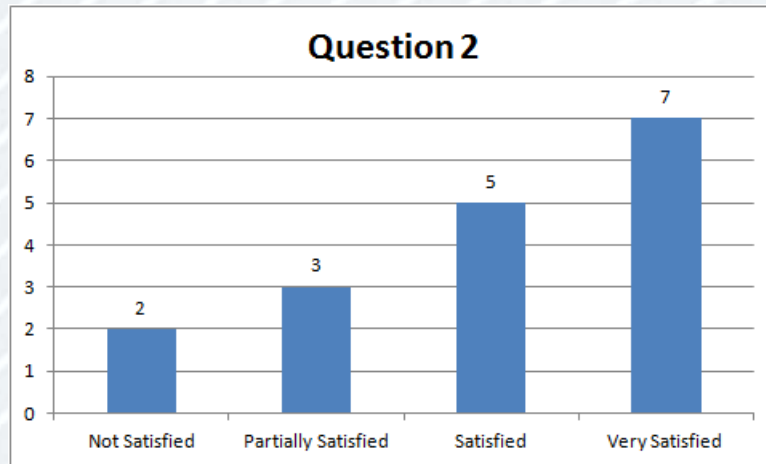
## **Critical Comment:**

- Prefer different connection to GEH to discourage through traffic on Coolgardie (Ben Street).
- Alternative upgrades to Great Eastern Highway – grade separation.
- Park and Ride too far from station.



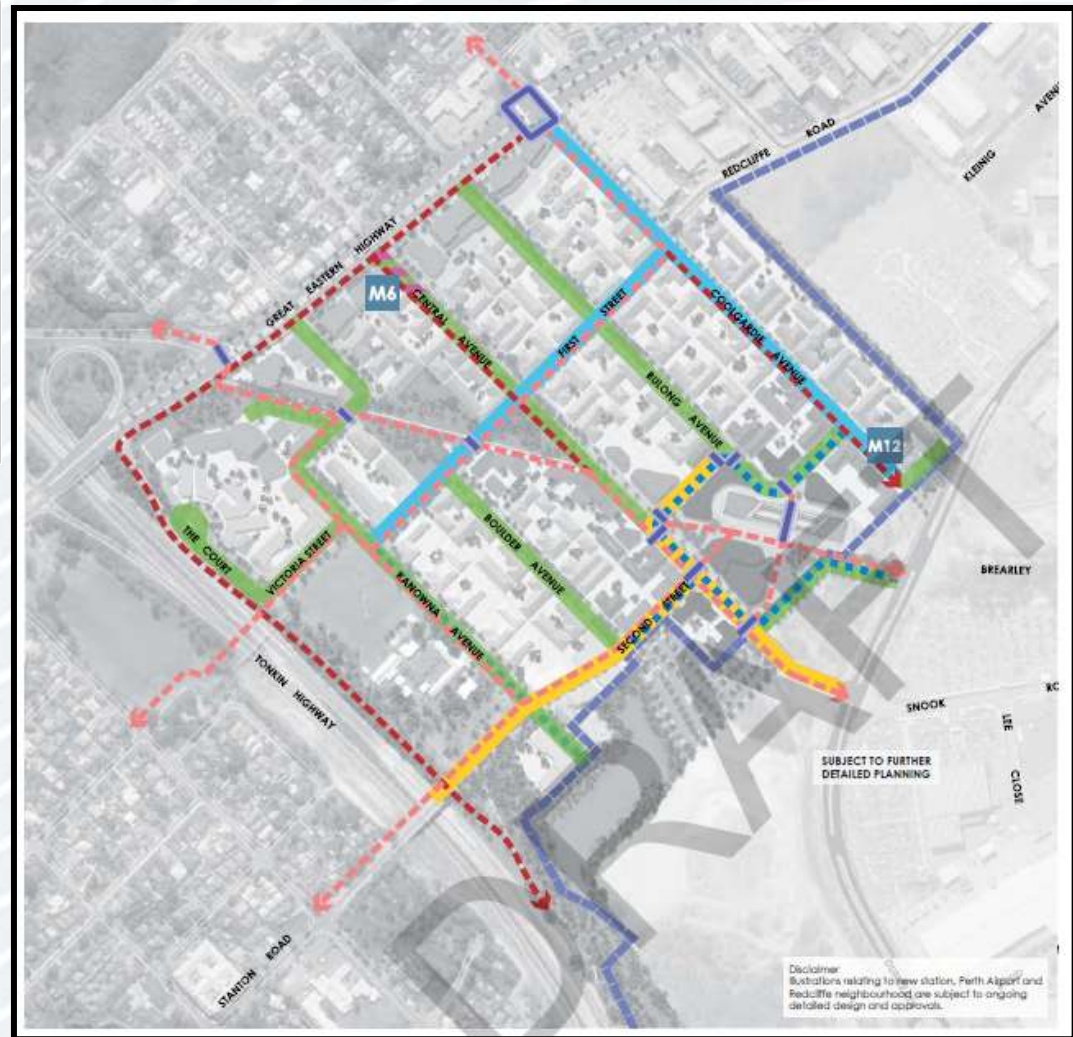
## 2. CYCLE WAYS AND PEDESTRIAN NETWORKS

*Are you satisfied with the proposal for cycle ways and pedestrian networks as shown on the detailed plan? (17)*



### Critical Comment:

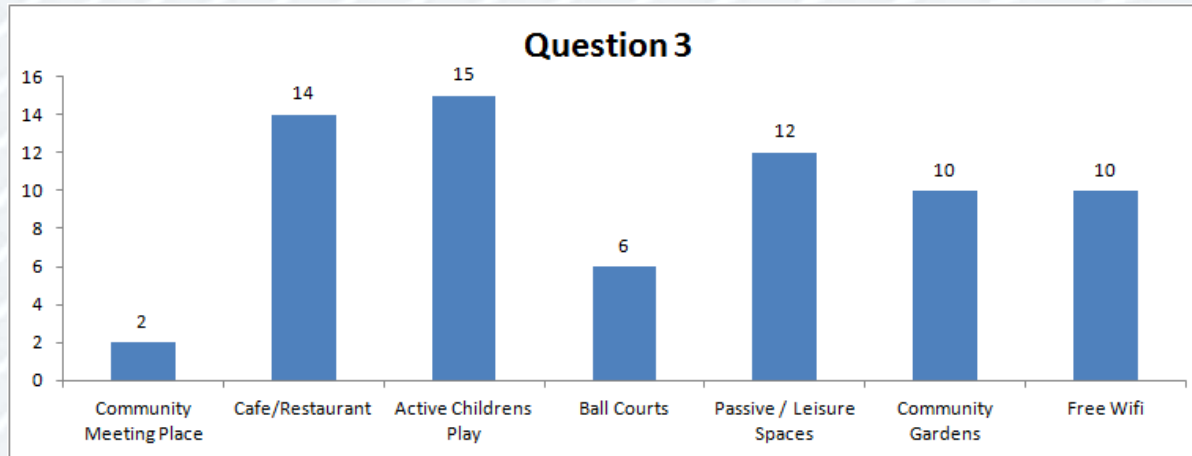
- Request for more detailed plans showing cycle paths – Coolgardie / GEH intersection.
- Pedestrian crossing requires upgrading at GEH / Coolgardie intersection.





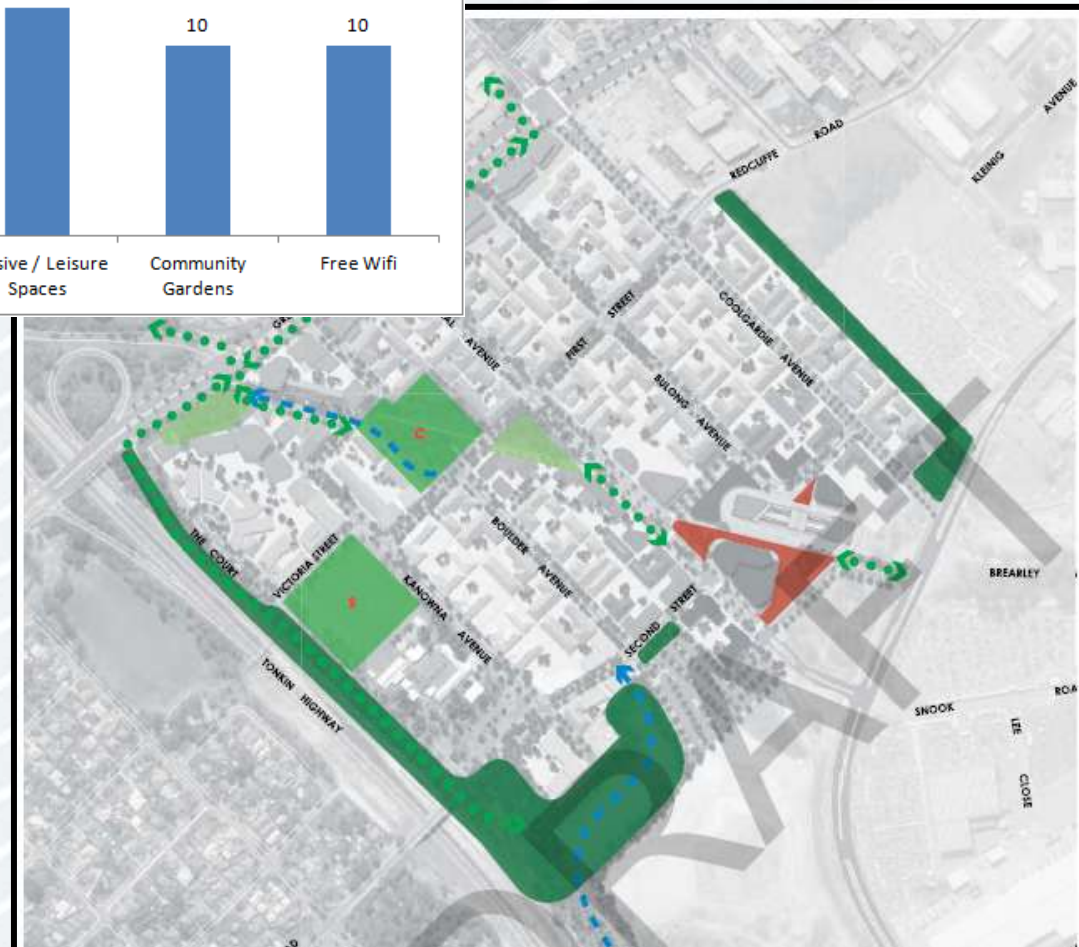
# 3. PUBLIC SPACE USES AND FACILITIES

*What types of uses would you like to see in the DA6 parks and public spaces?*



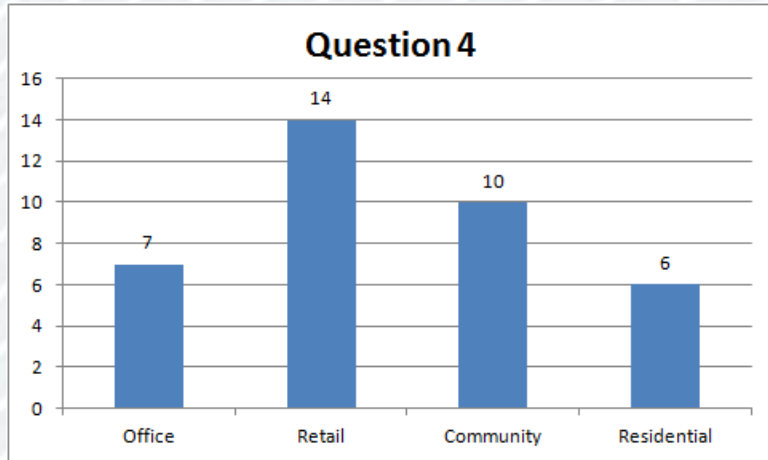
## Additional Comment:

- Mosquito program
- Waterplay
- Sporting grounds
- Outdoor entertainment venue
- BBQ/Picnic facilities
- Wetland



## 4. MIXED USE CENTRE

*What kind of land uses would you like to see built in the mixed use centre?*



### Additional Comment:

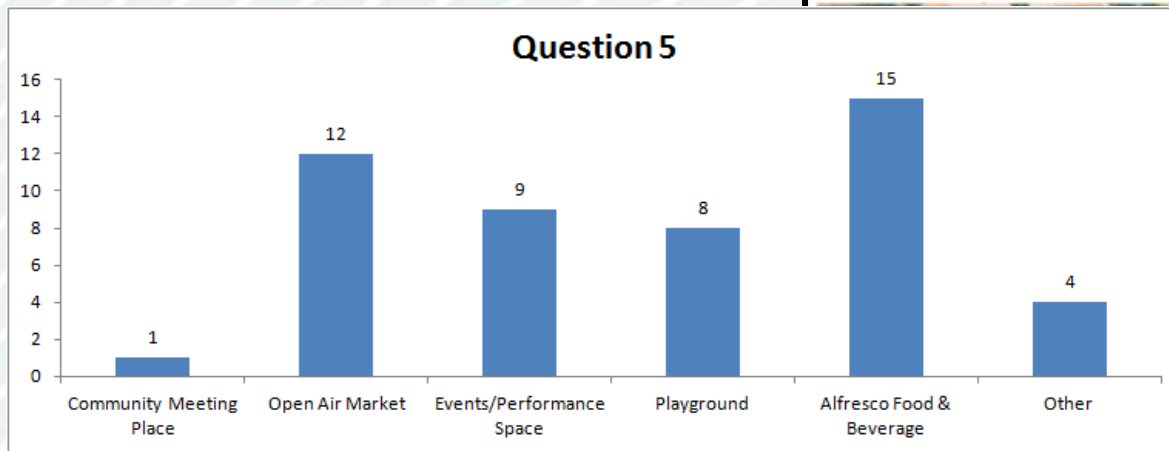
- Office uses provided within Perth Airport land.





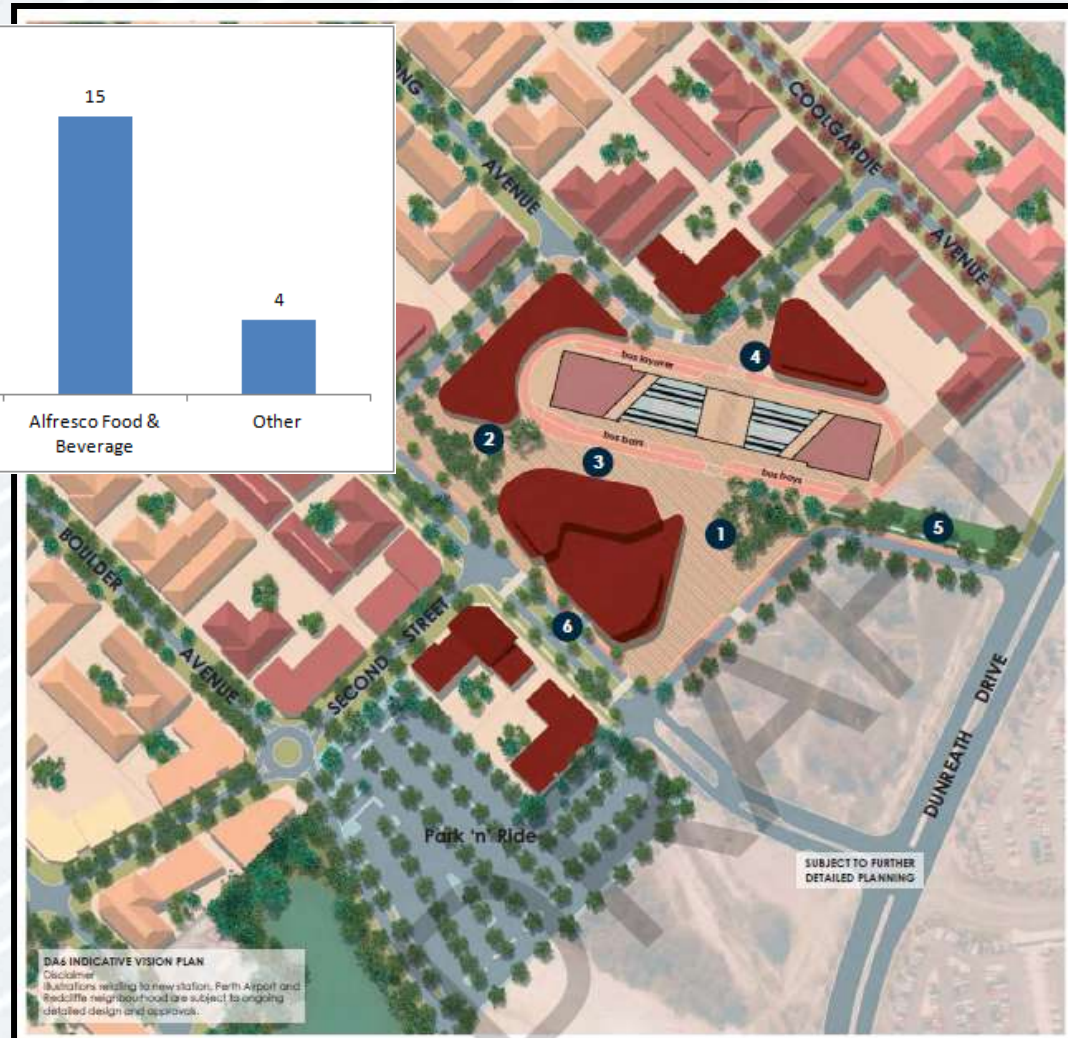
# 5. STATION PLAZA USES

*What kind of passive and active uses would you like to see accommodated in the station plaza?*



## Other:

- Farmers Market
- Child Care Centre



# GENERAL FEEDBACK: DENSITY

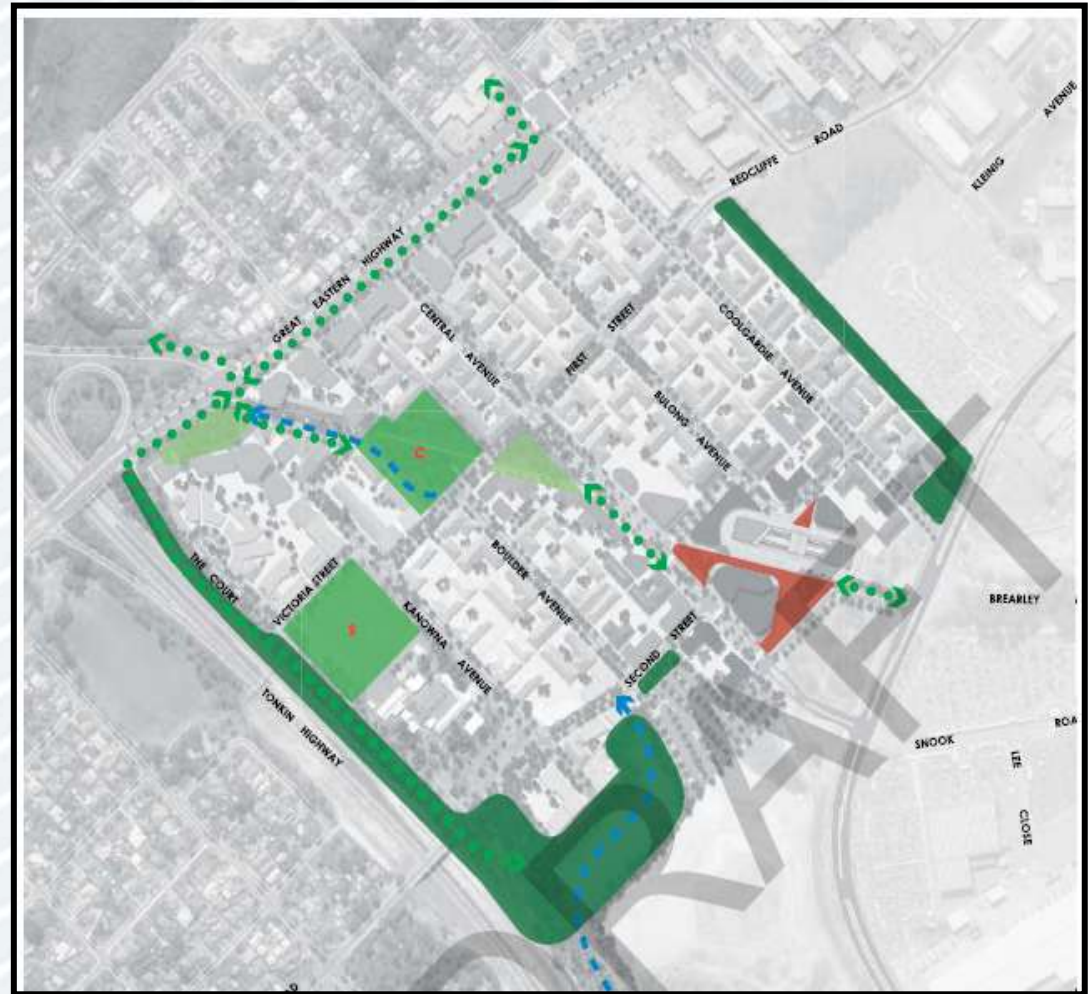
- Development of the station and increased density is seen as **an opportunity for residents.**
- Residents enquired about the **rezoning process** – timing and potential development options.
- Residents living/owning property on Bulong Avenue and Boulder Avenue, currently proposed as R60 under the Vision Plan are **keen to see higher density coding of R80/R100 applied.**





# GENERAL FEEDBACK: OPEN SPACE / DRAINAGE

- Residents were keen to understand **impacts on landscape and ecology** as a result of tunnelling and dewatering.
- Residents keen to understand **drainage impacts and proposals** – particularly associated with Coolgardie Ave / Dunreath and the Southern Main Drain.
- Welcomed the potential for **better quality open space** and facilities such as local dog walking parks, cafes/restaurants in park and around station.





# GENERAL FEEDBACK: STATION

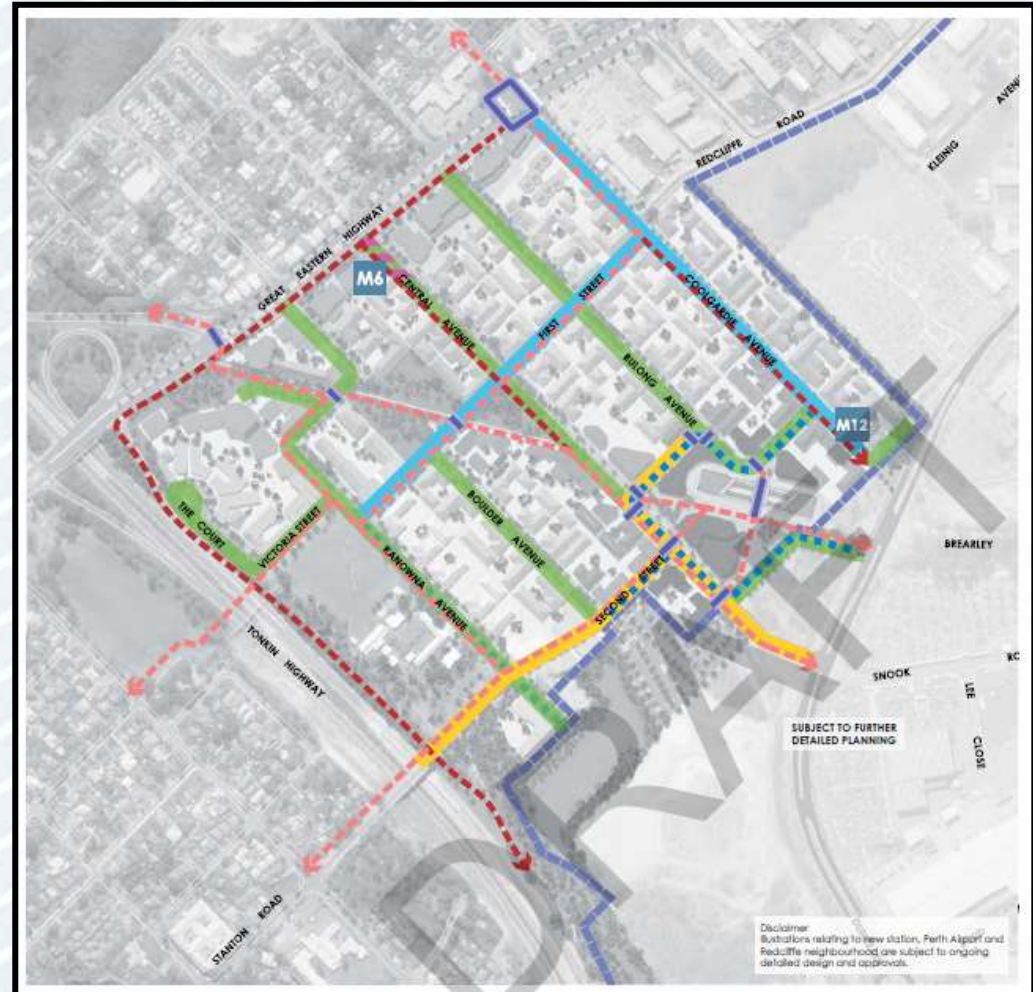
- What **security measures** will be in place with the area with the introduction of the station and Park n Ride?
- Some residents questioned why the **station is named 'Airport West'** as it does not serve an airport function.
- Community members suggested a **more local name** (e.g. Redcliffe Station).
- Residents were keen to understand **the station construction traffic and works** be managed and how long the construction period would be?





# GENERAL FEEDBACK: MOVEMENT

- Community members welcomed the increased provision of footpaths and cycleways and were also keen to have **safer pedestrian/cycle crossings over Great Eastern Highway.**
- Some concern was expressed regarding **traffic volumes on Second Avenue/Stanton Road once the station is opened.**
- Several community members were concerned over the opening of **Bulong Avenue at Great Eastern Highway.**
- More information on **staging process** for road closure/opening.





# QUESTIONS?



**Jarrold Ross**

Coordinator Planning Services

City of Belmont

[Jarrod.ross@belmont.wa.gov.au](mailto:Jarrod.ross@belmont.wa.gov.au)