

CITY OF BELMONT

Advice of Lodgement of Development Assessment Panel Application

Type of Application: DAP Form 1
Date Lodged: 20 March 2024
Address: 170 Alexander Road RIVERVALE 6103 (Lot 68 DIA 46023)



Application No: 91/2024
Description of Development: 26 Multiple Dwellings

The development proposal involves the demolition of the existing dwelling and replace with 26 Multiple Dwellings (co-living accommodation), over a two to three storey building.

If you have any questions in relation to this application, please contact Alex Bott, Manager Planning Services at 9477 7273 or Alex.Bott@belmont.wa.gov.au.

CITY OF BELMONT
RECEIVED
21/03/2024
Application No: 91/2024



View from Hutchison Street

CITY OF BELMONT
RECEIVED
21/03/2024
Application No: 91/2024



View from Alexander Road



View from Alexander Road



ALEXANDER RD

HUTCHISON ST

CITY OF BELMONT
RECEIVED
21/03/2024
Application No: 91/2024



1 NORTH ELEVATION
1:100

- MATERIAL KEY**
- BAL-1 METAL BALUSTRADE - DARK
 - BW-1 FACE BRICKWORK - LIGHT
 - BW-2 BREEZE BLOCKWORK - LIGHT
 - CB-1 COLOURBACK GLASS - DARK
 - PL-1 PLANTER BOX - DARK
 - RE-1 ACRYLIC TEXTURE RENDER - LIGHT
 - RE-2 ACRYLIC TEXTURE RENDER - DARK
 - RF-1 CORRUGATED SHEET ROOF - DARK
 - SCN-1 VERTICAL SCREENING - TIMBER LOOK
 - SCN-2 PERFORATED SCREENING - DARK

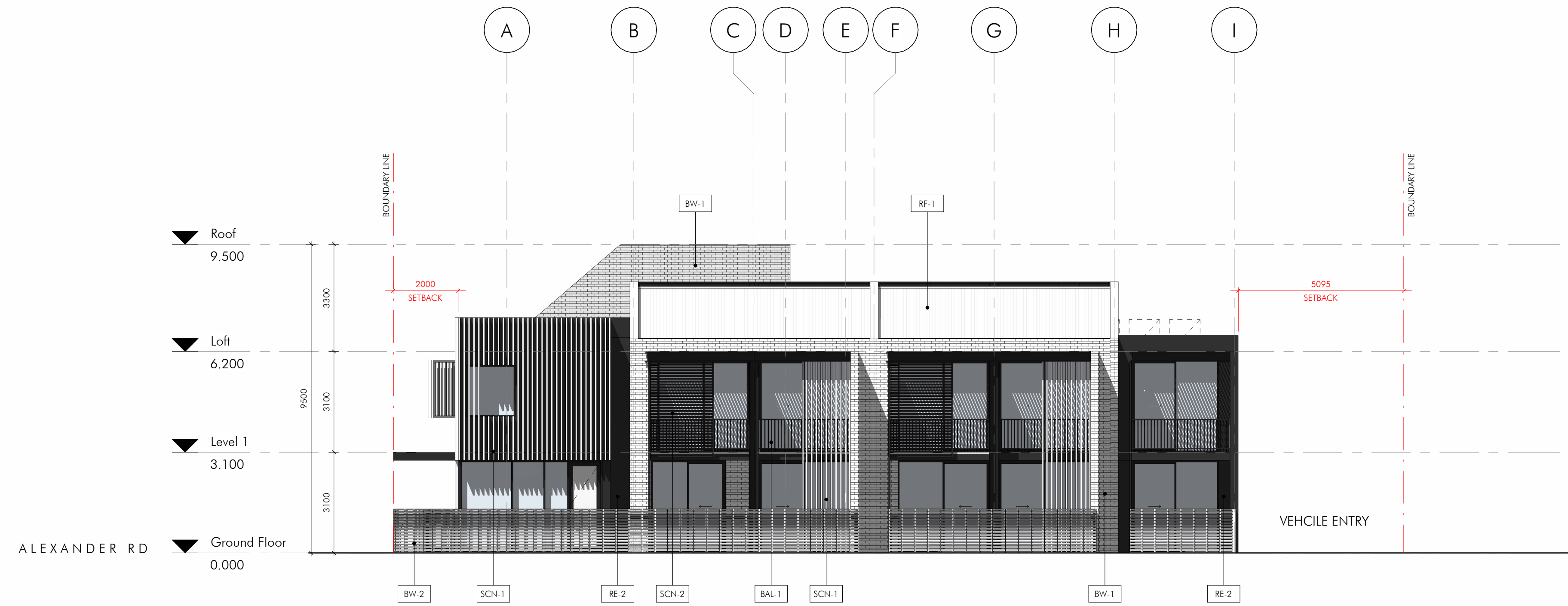


2 SOUTH ELEVATION
1:100



1 EAST ELEVATION
1 : 100

- MATERIAL KEY**
- BAL-1 METAL BALUSTRADE - DARK
 - BW-1 FACE BRICKWORK - LIGHT
 - BW-2 BREEZE BLOCKWORK - LIGHT
 - CB-1 COLOURBACK GLASS - DARK
 - PL-1 PLANTER BOX - DARK
 - RE-1 ACRYLIC TEXTURE RENDER - LIGHT
 - RE-2 ACRYLIC TEXTURE RENDER - DARK
 - RF-1 CORRUGATED SHEET ROOF - DARK
 - SCN-1 VERTICAL SCREENING - TIMBER LOOK
 - SCN-2 PERFORATED SCREENING - DARK



2 WEST ELEVATION
1 : 100