

CITY OF BELMONT

Facilities for Hire

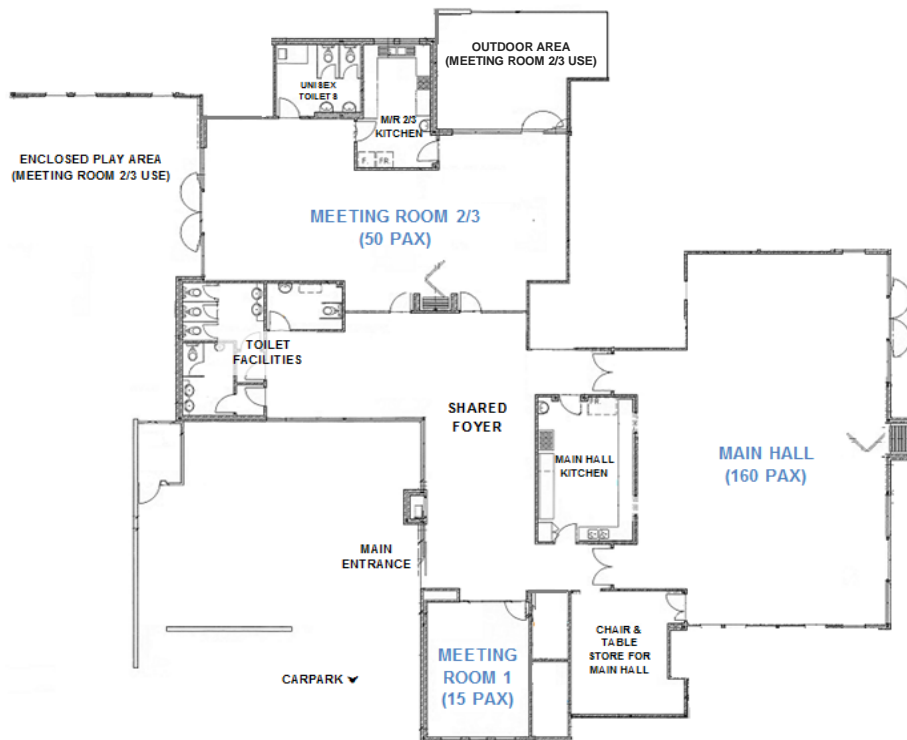
Rivervale Community Centre



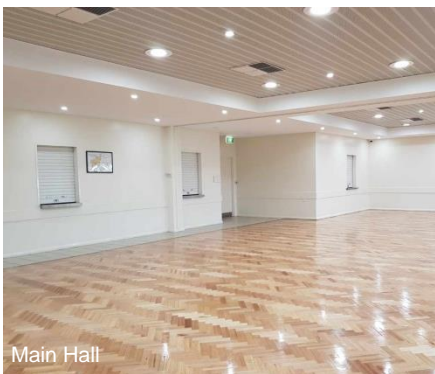
Rivervale Community Centre features a large main hall, ideal for weddings, dance classes and large social functions. Meeting Room 2/3 is recommended for smaller family functions such as children's parties due to the room having an enclosed play area attached. This centre also features a small meeting room.

GENERAL INFORMATION	
Address	100 Gerring Court, Rivervale (corner of Surrey Road & Francisco Street)
Access Friendly	Yes, access friendly parking and toilets available
CCTV	Yes (cameras will not be turned off for bookings and are not permitted to be obstructed at any time)
Parking	Small carpark on Francisco Street (14 bays) & street parking on Gerring Ct & Surrey Rd
Wi-Fi	No
Equipment	Items such as TV's, projectors, audio/visual equipment and also cleaning equipment etc. are not provided and not available for hire through the City. Hirers have to supply all their own required equipment.

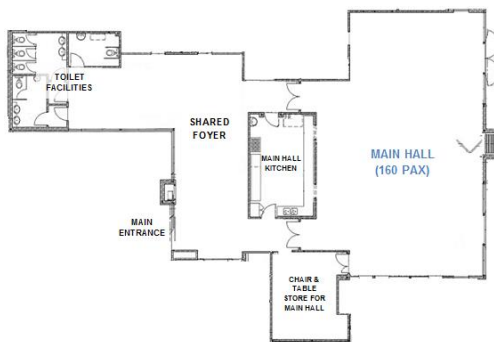
ROOMS AVAILABLE FOR HIRE



MAIN HALL	
Size	Approximately 16.5m x 11m (181sqm)
Max Capacity	160 people <i>(It is an offence under the Health Act 1911 to exceed the maximum capacity stipulated on the certificate of approval)</i>
Floor	Timber
Chairs	160 <i>(measurements and photos available upon request)</i>
Tables	25 trestle tables - 1800mm x 750mm <i>(photos available upon request)</i>
Air Conditioning	Evaporative <i>(cooling only)</i>
Kitchen	Yes, included in hire is a large kitchen with a fridge/freezer, large gas stove and electric oven, auto boiler urn, microwave and serveries into the hall. Hirers are required to bring all their own plates/cutlery/cookware/cleaning equipment. The kitchen is to be used for warming up food purposes only.
Toilets	Yes - shared facilities with the other rooms in the centre (located in foyer)
Additional	This hall features a divider that can separate the hall into two sections



Main Hall



Areas Included in Hire *(toilets and foyer shared use)*



Main Hall Kitchen

MEETING ROOM 1	
Size	Approximately 27sqm
Max Capacity	15 people <i>(It is an offence under the Health Act 1911 to exceed the maximum capacity stipulated on the certificate of approval)</i>
Floor	Vinyl
Chairs	15 <i>(measurements and photos available upon request)</i>
Tables	3 trestle tables - 1800mm x 750mm <i>(photos available upon request)</i>
Air Conditioning	Split System <i>(heating & cooling)</i>
Kitchen	None included
Toilets	Yes - shared facilities with the other rooms in the centre (located in foyer)



Meeting Room 1

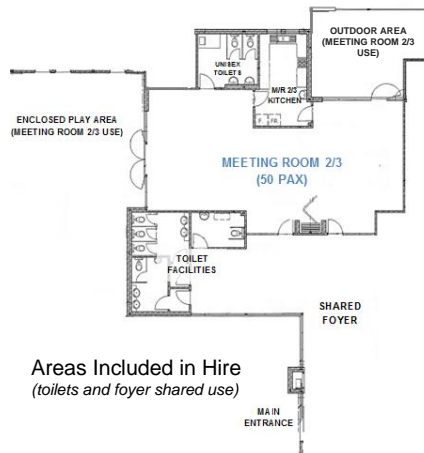


Areas Included in Hire *(toilets and foyer shared use)*



Meeting Room 1

MEETING ROOMS 2/3	
Size	Approximately 7m x 10m (70sqm)
Max Capacity	50 people <i>(It is an offence under the Health Act 1911 to exceed the maximum capacity stipulated on the certificate of approval)</i>
Floor	Vinyl
Chairs	50 <i>(measurements and photos available upon request)</i>
Tables	7 trestle tables - 1800mm x 750mm <i>(photos available upon request)</i>
Air Conditioning	Evaporative <i>(cooling only)</i>
Kitchen	Yes, included in hire is a kitchen with a fridge/freezer, oven, auto boiler urn and microwave. Hirers are required to bring all their own plates/cutlery/cookware/cleaning equipment. The kitchen is to be used for warming up food purposes only.
Toilets	There are unisex facilities inside the room however the main facilities are- shared with the Hall & Meeting Rooms (located in foyer).
Additional	<ul style="list-style-type: none"> • Large enclosed play area (slide, sandpit etc.) under a shade sail. • A second enclosed courtyard is attached to the room overlooking the park area. • This room features a divider that can split the room into two sections. • Pin boards available for use during the time of hire.



Video tours of this facility are available on the City's website
<http://www.belmont.wa.gov.au/Community/VenuesForHire>

For further information and availability please contact venue.hire@belmont.wa.gov.au

