

CITY OF BELMONT

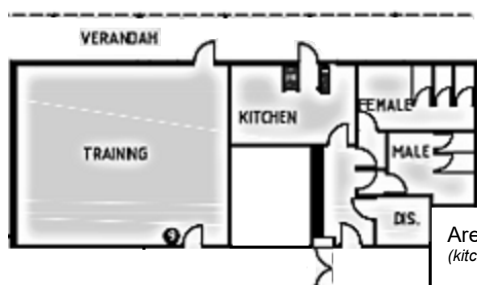
Facilities for Hire

Youth & Family Services - Training Room



The Youth & Family Services Building is conveniently located on Abernethy Road and features a training room that is suitable for meetings, training sessions and small seminars.

GENERAL INFORMATION	
Address	275 Abernethy Road, Cloverdale
Access Friendly	Yes, access friendly parking, toilets and ramps available
CCTV	Yes <i>(cameras will not be turned off for bookings and are not permitted to be obstructed at any time)</i>
Parking	Yes – there is a large carpark out the front of the building
Wi-Fi	No
Equipment	Items such as TV's, projectors, audio/visual equipment and also cleaning equipment etc. are not provided and not available for hire through the City. Hirers have to supply all their own required equipment. There is a small whiteboard available for use but markers are not provided.
TRAINING ROOM	
Size	Approximately 8m x 10m (80sqm)
Max Capacity	60 people <i>(It is an offence under Health Act 1911 to exceed the maximum capacity stipulated on the certificate of approval)</i>
Floor	Vinyl
Chairs	60 <i>(measurements and photos available upon request)</i>
Tables	10 trestle tables - 1800mm x 750mm <i>(photos available upon request)</i>
Air Conditioning	Ducted <i>(heating & cooling)</i>
Kitchen	Yes, included in hire is a <u>shared</u> kitchen facilities that have a fridge/freezer, small stove and oven, auto boiler urn, microwave and servery to the training room. Hirers are required to bring all their own plates/cutlery/cookware/cleaning equipment. The kitchen is to be used for warming up food purposes only.
Toilets	Yes – shared facilities located in the passageway
Note	The room features an enclosed outdoor area (shared access via the kitchen)



Areas Included in Hire
(kitchen & toilets shared facilities)

For further information and availability please contact venue.hire@belmont.wa.gov.au

