



CITY OF BELMONT

# Age Friendly Belmont Strategy 2022-2027







Acknowledgement of Country

“The City of Belmont acknowledges the Noongar Whadjuk people as the Traditional Owners of this land and we pay our respects to Elders past, present and emerging. We further acknowledge their cultural heritage, beliefs, connection, and relationship with this land which continues today.

We acknowledge all Aboriginal and Torres Strait Islander peoples living within the City of Belmont.”

Alternative Formats

This document is available on the City of Belmont website and can be requested in alternative formats including electronic format by email, in hardcopy both in large and standard print and in other formats as requested. For further information please contact the Community Development team on (08) 9477 7219. For language assistance please contact TIS (Translating and Interpreting Service) on 131 450.

Contents

Mayor’s Message ..... 2

What is an Age-Friendly Community? ..... 3

Our Community ..... 4

Strategic Alignment..... 6

What We Have Achieved ..... 7

Engaging Our Community ..... 8

Community Themes and Actions..... 9

Measuring our Success ..... 12

Getting Involved..... 13





# Mayor's Message

The City of Belmont's first Age-Friendly Belmont Plan was developed in 2013 and subsequent versions have continued to guide the City in recognising the valuable contribution of our older residents and creating a community where people can live and thrive as they age. The new Age-Friendly Belmont Strategy aims to maximise the quality of life and on-going participation in community life for the City's older residents.

Our older residents are an asset to our City. We learn from their knowledge and experience while they continue to make an enormous contribution through their caring, volunteering, and advisory roles. Our vision is that these residents feel acknowledged, respected, and cared for as their journey through life continues. We recognise that for many, to be able to grow older without having to move from one's place of residence



to secure necessary support services and stay close to friends and family is of high importance. The Age-Friendly Belmont Strategy aims to develop actions that will respond to these needs and aligns with the City's Strategic Community Plan 2020-2040 outcome "All ages can live, work and play in the City."

Cr Phil Marks, Mayor  
City of Belmont

# What is an Age-Friendly Community?

An Age-Friendly community is one that anticipates and responds to the needs of its ageing population in a respectful and inclusive way. This understanding is shared by the community who value the contributions of older adults and encourage meaningful connections in everyday life.

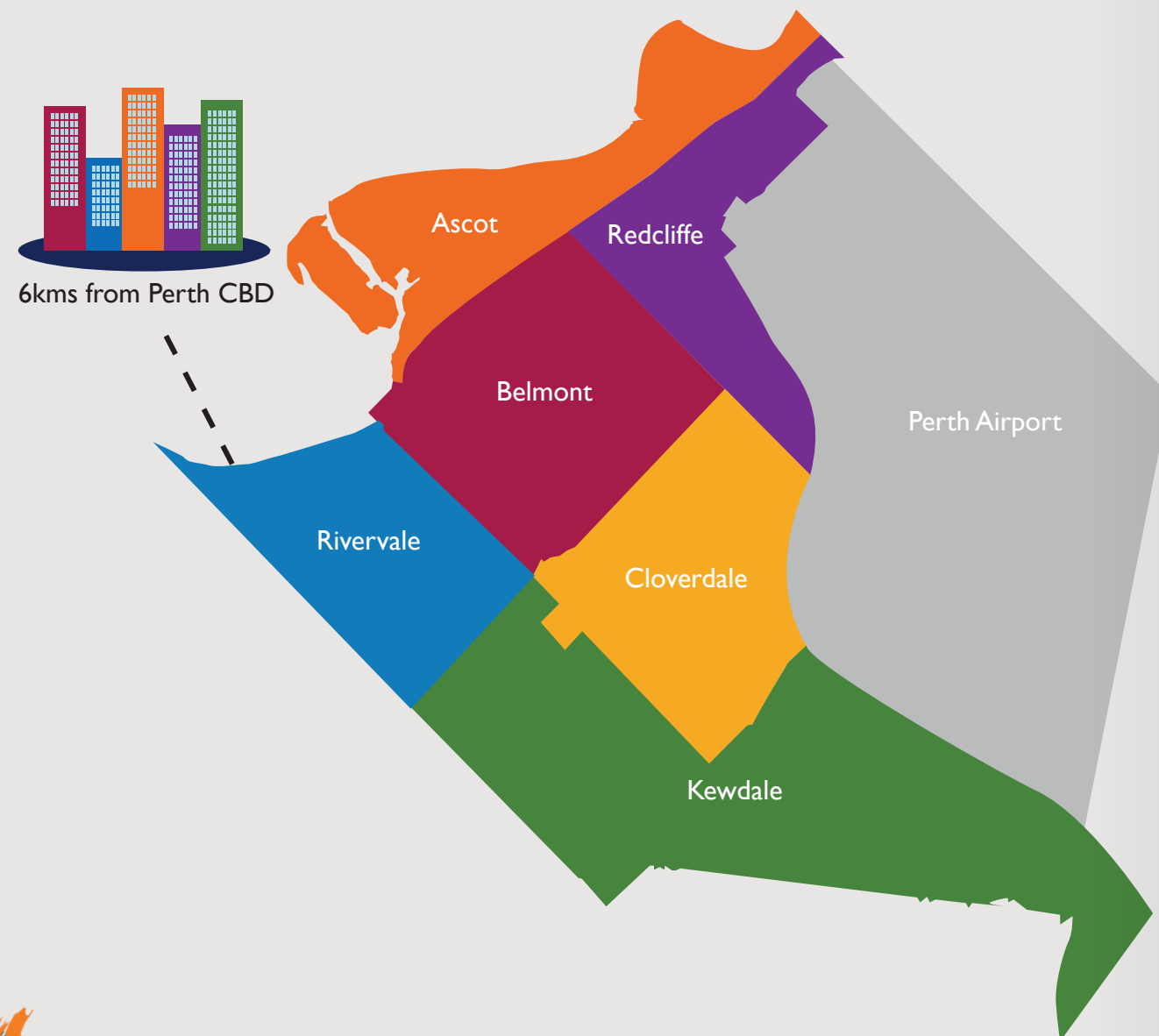
When a community is designed with older residents in mind, it becomes more accessible for everyone. For an individual to age well means to be able to do the things that are of value to them. An age friendly community considers 8 key areas as presented in diagram 1.

**Diagram 1: Key Areas of a Age-Friendly community.**



# Our Community

The City of Belmont is a highly diverse metropolitan Local Government located six kilometres east of the Perth CBD. It comprises of six suburbs including Ascot, Belmont, Cloverdale, Kewdale, Redcliffe and Rivervale covering a total land area of 40km<sup>2</sup>. The Traditional Owners of the land on which Belmont is located are the Whadjuk people of the Noongar nation.



## Demographics

The City of Belmont population 42,257 (ABS 2021 data). 8,183 (approximately 20%) of this total population are 60 years and older.



A total of over 24% of residents over 60 report living alone.



A total of 1539 people 60+ years of age (19%) continue to be engaged in some level of employment.



Of the total 8,183 residents over 60, 67% are between 60 and 74 years of age with the remaining 33% being 75 years and over.

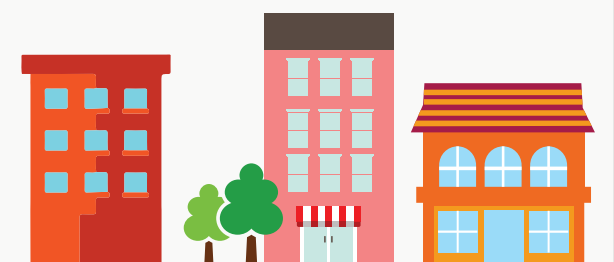
Statistics provided by Dementia Australia indicate that up to 696 City of Belmont residents are living with dementia (2021).



Age groups are dispersed broadly across the City with a slightly larger presence of older residents living in Rivervale, Cloverdale and Kewdale.



A significant number of residents (18% of all residents over 60) are in rental accommodation.



The City provides independent livings units managed by a third party providing a total of 77 units as affordable housing for older residents. The City is home to the Faulkner Park Retirement Village comprising a total of 72 units. Residential Aged Care services within the City of Belmont provide 322 beds with a proposed increase of 96 beds provided by Marist Lodge by 2023.



# Strategic Alignment



The City of Belmont's Strategic Community Plan (SCP) 2020-2040 was developed through extensive community engagement resulting in the following community vision for the City: "We will be home to a diverse and harmonious community, thriving from the opportunities of our unique, riverside City."

The Age-Friendly Belmont Strategy contributes to a number of outcomes outlined in the SCP, which both benefit the general community as well as older residents. For example, an action to improve the walkability and pedestrian safety within the City gives consideration to the specific needs of older residents.

To achieve the City's SCP, a range of Strategies and Plans have been developed that may also contribute to creating an Age-Friendly City. These include:

- The **Disability Access and Inclusion Plan 2022-2026** with its focus on ensuring all residents can access services and facilities and reduce barriers to participation in community life.
- The **Multicultural Strategy 2020 and Beyond** which includes actions for seniors of Culturally and Linguistically Diverse backgrounds and creating social connections.
- The **Reconciliation Action Plan 2018-2021** which incorporates actions to engage seniors from Aboriginal and Torres Strait Islander backgrounds and address concerns such as housing and rights of older people.
- **Youth Strategy 2019 and Beyond** which incorporates opportunities for intergenerational engagement.
- **Community Placemaking Strategy 2018-2023** with actions to build community capacity and offering more localised activities.

Other key City Plans that contribute to an Age-Friendly Community include: the Public Open Space Strategy; Belmont on the Move – Integrated Movement Network Strategy; Community Safety and Crime Prevention Strategy; and the Local Housing Strategy. Care has been taken to ensure positive alignment with existing City strategies via internal stakeholder consultation.

# What We Have Achieved



Seniors exercise equipment installed at Harman Park.

The City has continued to deliver on the outcomes and actions defined in the City's Age-Friendly Belmont Strategy 2017-2021. A number of highlights include the:

- Seniors exercise equipment installed at Harman Park.
- The development of the Seniors Activity Guide (hardcopy) to promote Age Friendly City programs and other activities and supports for older people located in City of Belmont.
- Installation of bus shelters in various locations as identified to provide additional rest, shade, and benches with armrests in public spaces.
- Delivery of the 'Let's Talk' series providing a range of workshops and information sessions.
- Delivery of physical activity events such as Seniors Information and Activity Day, CountUsin and the Stay Sharp Program.
- Development of Connect Club, term-based program to increase skills and confidence using digital devices.
- Delivery of a range of on-going City library programs including retro-games, knitting group and book clubs.
- Financial support to a range of senior community groups through the City's Community Contribution Fund.



# Engaging Our Community



The Age-Friendly Belmont Strategy has been developed in direct consultation with the community and relevant stakeholders throughout 2021. This has been achieved through engaging directly with seniors at events such as the Pioneers Luncheon, the Seniors Information and Activity Day, and Seniors Week events. Further consultation was undertaken through surveys and workshops.

## What you told us

The feedback from City of Belmont residents was extremely positive with comments such as:

- “The City is very forward in its thinking of all ages living in Belmont”.
- “I have lived in Belmont since 1969 I think it’s a great place to live and there is plenty of things going on - good things for the community”.
- “A great place to live. We love it!”
- “Friendly place to live with great parks and shops”.
- “Good activities and events for seniors”.

## What is most important:

- Good access to buildings and parks.
- Time with family and friends.
- Good health services.
- Good transport options.
- Up to date information on services and activities.

## What could be improved:

- Access and information on low-cost home maintenance services.
- Increased ACROD parking bays and better surveillance of their use.
- More community transport options for people with mobility issues (distance to and between bus stops).
- Parks with more seating at accessible heights, with accessible spacing that include armrests.
- More support around digital technology.
- Provide information in hard copy.
- Becoming dementia friendly.
- Advocacy on housing issues.
- Provide more opportunity for social connections around the City

# Community Themes and Actions



As a result of the community feedback and what we have achieved so far, the City has identified strategies and key actions which will positively contribute to creating an Age-friendly community.







## Theme 1 Getting Around

This theme considers the accessibility of buildings and outdoor spaces and the transport needs of an age-friendly community. Actions to address this include:

- Advocacy for the maintenance of parks and pedestrian infrastructure and to improve the walkability and safety of our older residents.
- Investigation into innovative community-based transport options to improve access to facilities, services and activities within the City of Belmont.
- Considering the needs of older residents and people living with dementia in the development of any new or existing City's built environment.
- Advocacy for increased accessibility of facilities and services within the City of Belmont business community.



## Theme 2 Involved, Connected and Valued

This theme considers the opportunities for social connection and feeling respected and valued within the community. Actions to address this include:

- The development and delivery of a range of social and physical activities inclusive of Seniors.
- Promotion of volunteering and other opportunities to engage Seniors in public participation.
- Continuing to support older residents, carers and families living with dementia through initiatives such as the Forget me Not Café.
- Creating opportunities for intergenerational and intercultural connections.



## Theme 3 Informed and Supported

This theme considers the ease to access and understand information and the provision of accessible community support. Actions to address this include:

- Facilitating the delivery of information sessions on key issues impacting older people.
- Ensuring City of Belmont information is provided in a range of formats and are easy to access.
- Providing support to local community groups who provide programs to older residents.
- Collaborating with partners to develop initiatives that address the needs of older residents.



## Theme 4 Safe and Secure

This theme considers aspects of community and personal safety, older people's rights and support to age in their own home. Actions to address this include:

- Supporting the development of affordable housing options for older people as part of the local planning scheme.
- Facilitating safety initiatives through the City's Community Safety Alliance and other partnerships.
- Collaborating with organisations that raise awareness of older people's rights including Elder Abuse.
- Providing support to organisations that assist older residents to age at home.



## Measuring our Success



The Age-Friendly Belmont Strategy will guide the City well into the future, however we understand that there may be changes in community needs and priorities. An implementation plan has been developed to identify the actions needed to contribute to the successful delivery of this strategy. This plan will be reviewed on a two-yearly basis and be updated as required.

The City will continue to engage with the City's Age-Friendly Advisory Group to assist in the monitoring of the strategy and will undertake the opportunity to engage with community members throughout the life of the strategy.

## Getting Involved



If you would like to find out more about programs and activities for Seniors please visit the City's website [Seniors | City of Belmont](https://www.belmont.wa.gov.au/seniors).

If you would like to be involved in supporting the development of the Age-Friendly Strategy you may wish to join our Age-Friendly Advisory Group. Please contact the City at [community.development@belmont.wa.gov.au](mailto:community.development@belmont.wa.gov.au) for more details.



# City of Belmont Civic Centre

215 Wright Street



## City of Belmont

215 Wright Street, Cloverdale WA 6105  
Locked Bag 379, Cloverdale WA 6985  
Open 8:30am - 4:45pm, Monday - Friday  
☎ PH: (08) 9477 7222  
☎ A/H: (08) 9477 7224

✉ [belmont@belmont.wa.gov.au](mailto:belmont@belmont.wa.gov.au)  
🌐 [belmont.wa.gov.au](http://belmont.wa.gov.au)  
f @BelmontCouncilWA  
🐦 BelmontCouncil  
📺 City of Belmont

**BELMONT**  
CITY OF OPPORTUNITY

