



Ordinary Council Meeting 23/03/21

Item 12.1 refers

Attachment 2

Plan of Amendment No.15

Creating opportunities

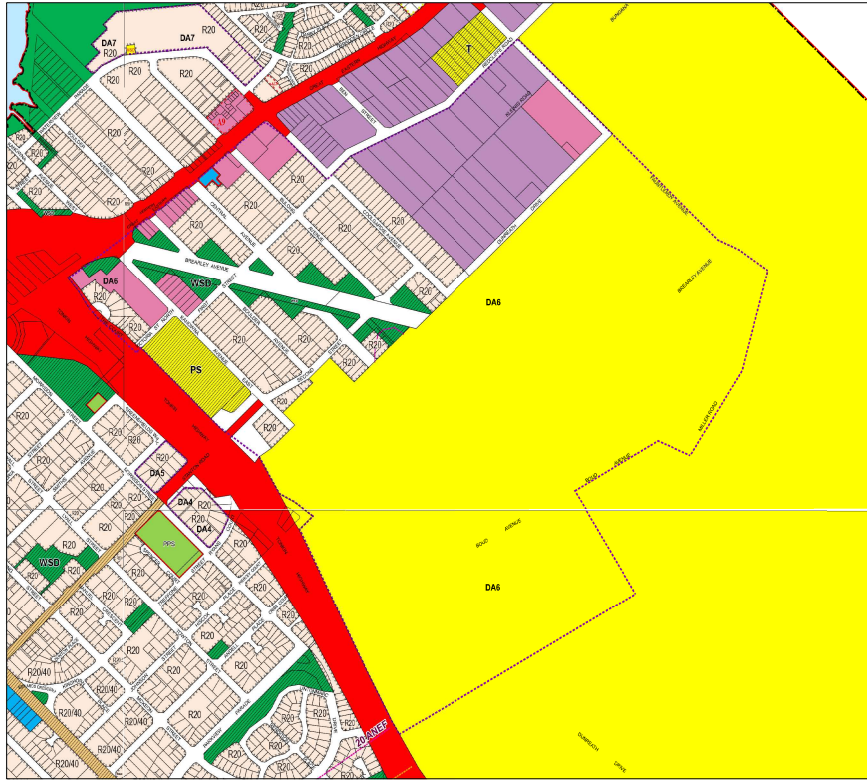


CITY OF BELMONT

Local Planning Scheme No.15

Amendment No. 15

EXISTING



LEGEND

REGION SCHEME RESERVES (MRS)

- PARKS AND RECREATION
- PRIMARY REGIONAL ROAD
- CG** PUBLIC PURPOSES
- Commonwealth Government
- WSD** PUBLIC PURPOSES
- Water Authority of WA

LOCAL SCHEME RESERVES

- LOCAL ROADS
- PARKS AND RECREATION
- PARKS AND RECREATION
- Water Supply Sewerage and Drainage
- PUBLIC PURPOSES - Primary School
- PUBLIC PURPOSES - Transport Depot

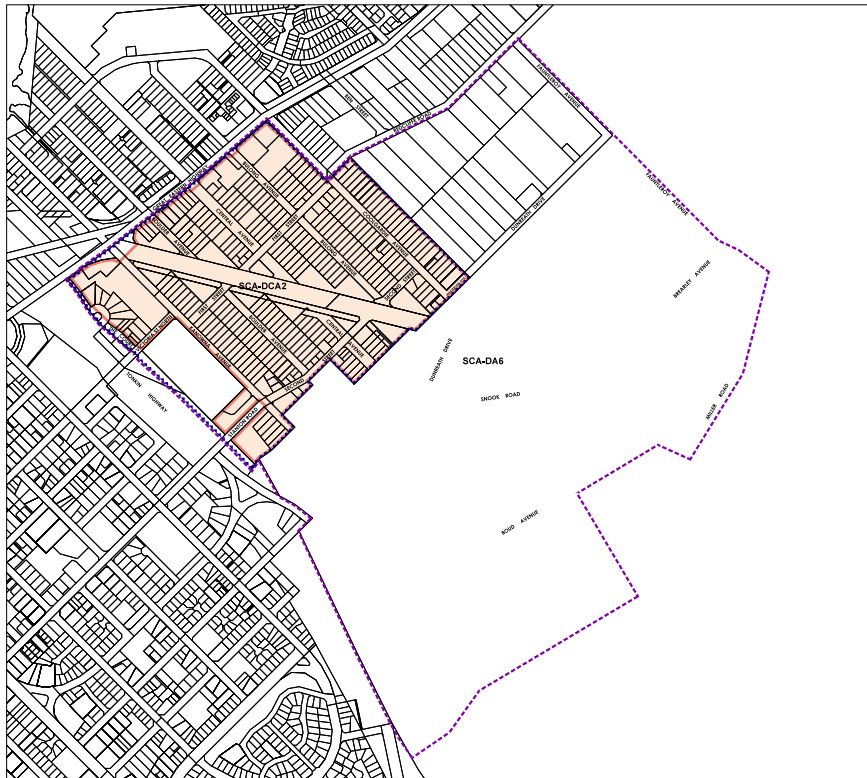
LOCAL SCHEME ZONES

- INDUSTRIAL
- MIXED USE
- PLACE OF PUBLIC ASSEMBLY
- RESIDENTIAL
(R20 density unless otherwise shown)
- SERVICE STATION

OTHER CATEGORIES

- R20 R CODES
- ADDITIONAL USES
- 20 ANEF CONTOURS
- DA6 DEVELOPMENT AREA

PROPOSED



LEGEND

LOCAL SCHEME ZONES

- URBAN DEVELOPMENT

OTHER CATEGORIES

- SCA-DA6 DEVELOPMENT AREA
- SCA-DCA2 DEVELOPMENT CONTRIBUTION AREA

scale:
1:20000@A4

plan:
16/065/147E



date:
23 Feb 2021