

Street Performer Guidelines



Acknowledgement

The City of Belmont acknowledges the Whadjuk Noongar people as the Traditional Owners of this land and we pay our respects to Elders past, present and emerging. We further acknowledge their cultural heritage, beliefs, connection and relationship with this land which continues today.

We acknowledge all Aboriginal and Torres Strait Islander peoples living within the City of Belmont.

1. Objectives

The City recognises the valuable contribution street entertainment performances make to the City's culture and vibrancy. Creating a dynamic and interesting street life and atmosphere in the City of Belmont is an important component in developing a prosperous local economy and continued evolution of Belmont's creative culture.

These Guidelines have been developed to –

- 1.1 Encourage high quality street entertainment to enhance the vibrancy, vitality and ambience of the City.
- 1.2 Identify locations suitable as performance sites for performers.
- 1.3 Provide a framework to ensure street entertainment is fostered in a well-managed manner, while maintaining the wellbeing, comfort, and safety of the public.

2. Definitions

- 2.1 **Authorised Officer:** a person appointed by the City of Belmont or a WA Police Officer
- 2.2 **The City:** the City of Belmont
- 2.3 **Street Performer:** person or persons engaging an audience through a street performance and holding a valid and current street performer permit
- 2.4 **Street Entertainment:** conduct, in a public place, which includes playing a musical instrument, singing, miming, dancing, poetry, giving an acrobatic or aerobic display or entertainment, but does not include public speaking

3. Terms and Conditions

- 3.1 Street performers must not jeopardise public safety, endanger an animal or damage public property in their acts.
- 3.2 The use of amplification during a performance must not create noise levels that adversely impact the operation of adjacent retail outlets or the enjoyment of the public or surrounding tenants. The volume should be appropriate for an audience viewing the performance.
- 3.3 Noise emissions must not exceed the assigned levels as specified in the environmental Protection (Noise Regulations) 1997.
- 3.4 Street performers must not advertise or provide goods for sale unless otherwise approved by the City.
- 3.5 Street performers must not undertake public speaking, distribute written materials, or solicit for charitable, religious or political causes.

- 3.6 Street performers must behave in an ethical and proper manner at all times. and must not cause a nuisance or act in an offensive or obscene manner.
- 3.7 Street performers must not interfere in any way with an approved entertainment or activity.
- 3.8 Street performers must ensure the location is left in its original condition. if any cleaning or repair is required, costs for these will be forwarded to the street performer.
- 3.9 A street performer who is performing visual art directly onto the pavement must use chalk; spray paint needs to be approved by the City and the location surface must be returned to its original condition unless otherwise approved by the City.
- 3.10 Street performers are responsible for all claims made against them for personal injury or property damage.
- 3.11 Street performers are responsible for their own equipment and belongings. No liability will be accepted by the City of Belmont for any lost or stolen equipment or personal items.
- 3.12 Street performers must hold a valid and current permit from the City of Belmont.
- 3.13 The City reserves the right to prohibit street entertainment in a designated area whilst City events or public works are in progress or for any other reason deemed relevant by the City.
- 3.14 A street performer may be prohibited from performing in the City of Belmont by an Authorised Officer at any time.
- 3.15 Street performers must use locations that do not unduly interfere with vehicular or pedestrian traffic, public amenities or cause undue obstruction to traders or delivery vehicles.
- 3.16 Street performers must hold a current valid Public Liability Insurance Certificate and, if applicable, a current Working with Children's Check. A current Police Clearance may be required subject to the performance type.

4. Street Performances by Minors

- 4.1 Any street performer under the age of 18 years must have parent/guardian consent to perform and must provide the contact details of their parent/guardian in the Street Performer Permit Application Form.
- 4.2 Any street performer under the age of 14 must always have parental or guardian supervision at all times.
- 4.3 A person under the age of 14 years cannot perform during school hours and between 7pm and 6am.

5. Using Dangerous Materials and Implements in Street Entertainment

When using dangerous materials or implements in their acts, street performers must hold a current valid licence, Public Liability Insurance, a valid Police Clearance and:

- 5.1 Ensure the health and safety of the audience viewing the performance and the general public.
- 5.2 Ensure that public and private property is not damaged in the course of the performance.

- 5.3 Define the performance space to be used, by establishing a physical boundary of at least two (2) metres between the street performer and the audience by utilising one, or a combination, of the following options: ropes or chains; chalk line (if the surface to be drawn on is not of a porous material such as granite or sandstone, and if the line drawn is water-soluble and removed once the street performer has completed the act).
- 5.4 Maintain an area of 1.5 metres of clear travel for passing pedestrians to be maintained at all times outside of the 2 metres of physical boundary.
- 5.5 Have an Australian approved fire blanket (AS/NZS 3504) and/or fire extinguisher (AS/NZS 1841) that it is appropriate for the risks present, which is kept visible and accessible throughout the performance.
- 5.6 In the case of the use of flammable liquids, fuels are limited to kerosene, firewater, or scented lamp oils (e.g., citronella) only. No other fuels will be permitted.
- 5.7 Only use, 'fit for purpose' portable containers of no greater than a five (5) litre capacity, for the storing and transporting of flammable liquids.
- 5.8 Carry containers suitably labelled in capital letters on both sides of the container of Class 3 flammable liquids, and the name of the liquid in the container, e.g., kerosene.
- 5.9 Use a container as a drip tray for flares or torches, or preferably use pre-soaking method for flares or torches. All drip stains on ground surfaces must be removed by the street performer using the site either during or immediately after the act has been completed.
- 5.10 When used as part of a performance, a controlled weapon must be handled in full accordance with the requirements of the Weapons Act 1999.
- 5.11 Comply with relevant legislation including the Occupational Safety & Health Act 1984.

6. Performance Locations

Performances can be carried out in the following approved locations throughout the City of Belmont.

- 6.1 Park locations are suitable for:
 - Musicians and musical groups
 - Statue and mime acts
 - Dance acts
 - Jugglers
 - Visual artists
 - Magicians
 - Fire acts (note: some park locations may not be suitable for these types of acts and therefore may not be granted a permit). All fire acts need to comply with any specific fire ban restrictions imposed on scheduled performance days.
- 6.2 Shopping Precincts and Belmont Hub are suitable for:
 - Musicians and musical groups
 - Statue and mime acts
 - Dance acts
 - Jugglers
 - Visual artists
 - Magicians

Parks

Garvey Park, Ascot



The Springs, Rivervale



Cracknell Park, Rivervale



Flame Tree Park, Rivervale



Shortland Jones Park, Rivervale

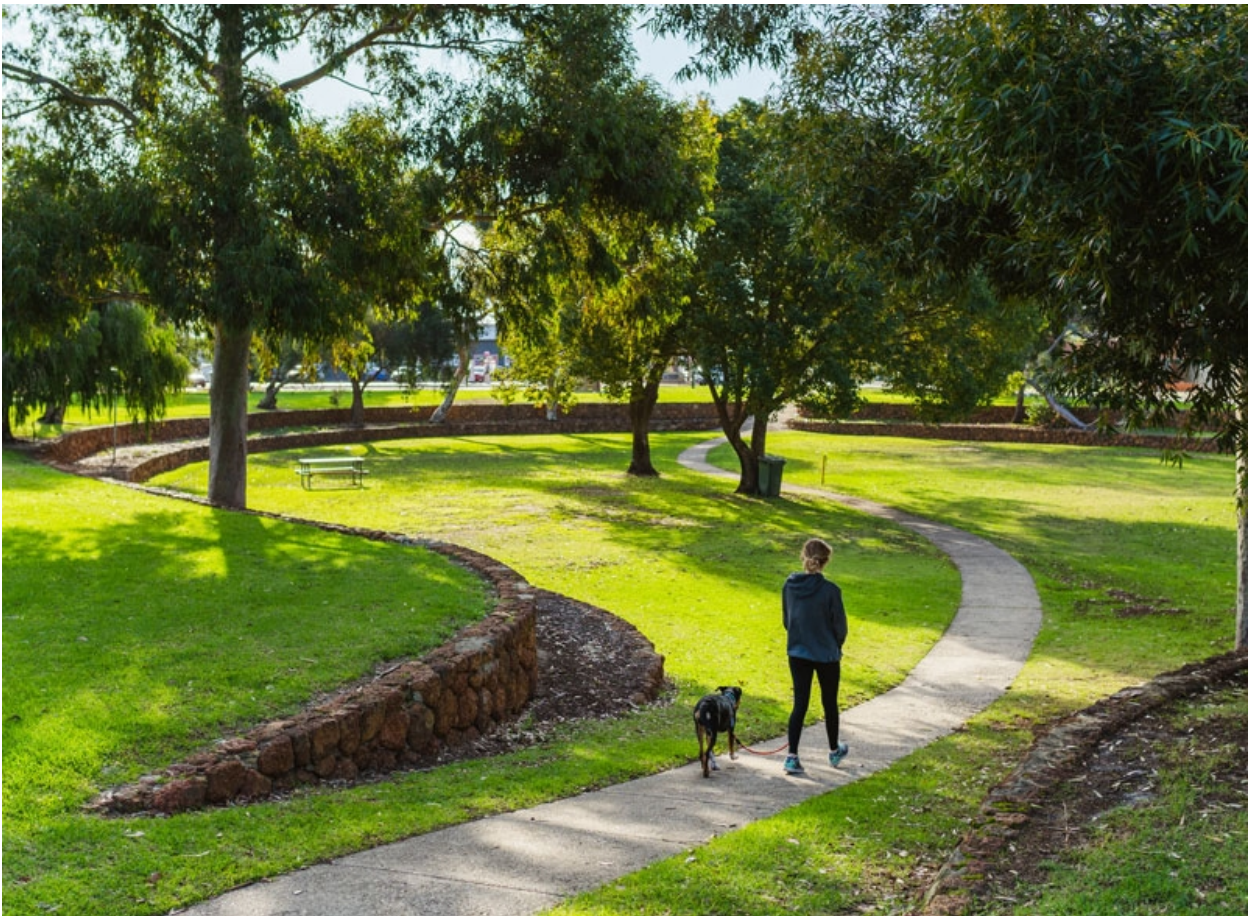


Tomato Lake Reserve, Kewdale



Volcano Park, Cloverdale



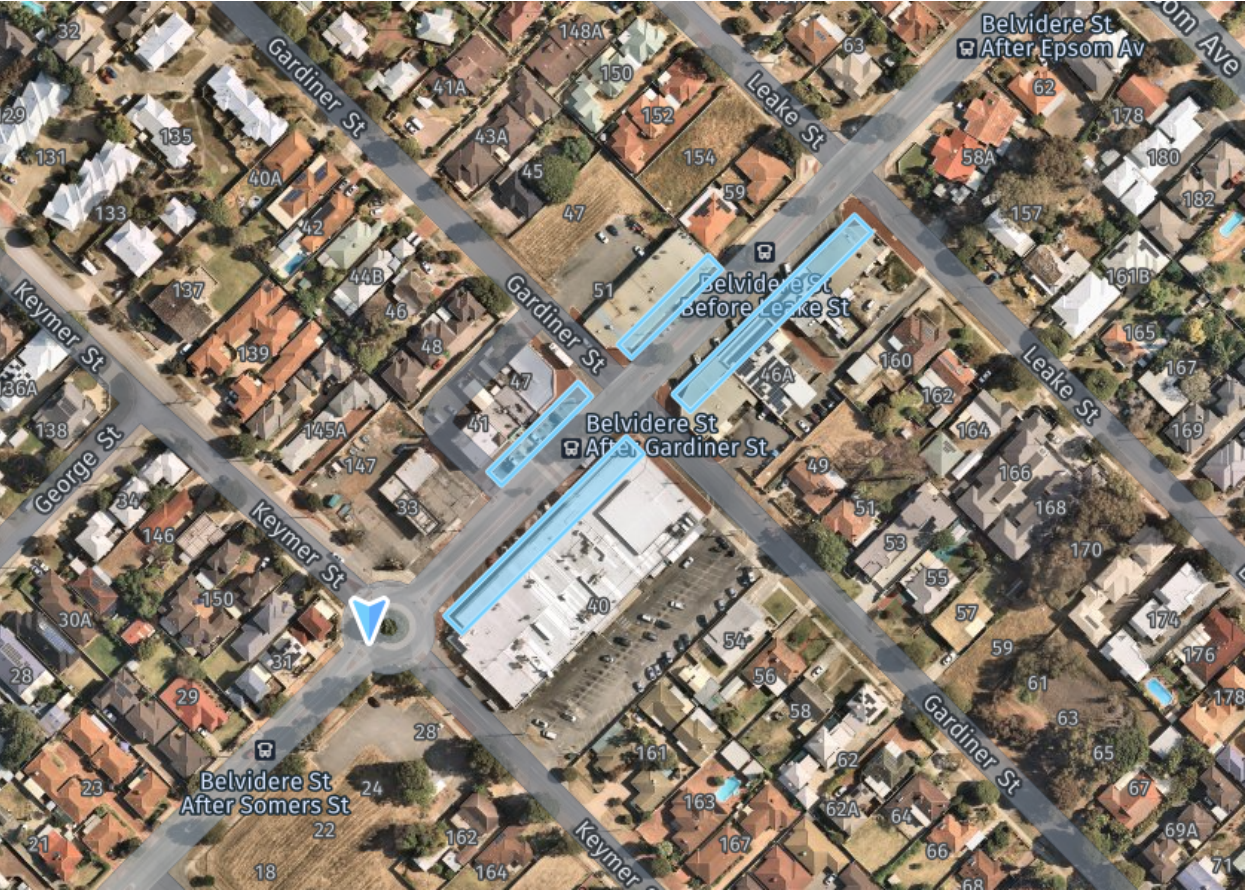


Shopping Precincts and the Belmont Hub

Belgravia Street Shopping Precinct, Cloverdale



Belvidere Shopping Precinct, Belmont



Epsom Ave Shopping Precinct, Belmont



Kooyong Road Shopping Precinct, Rivervale



Love Street Shopping Precinct, Cloverdale



Belmont Hub, Cloverdale

